

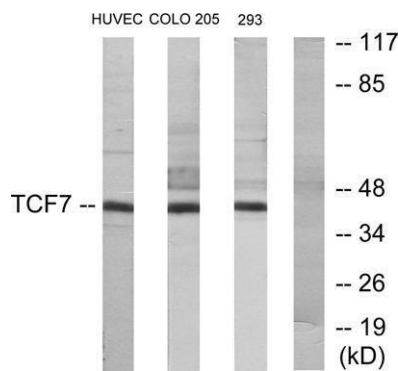
TCF-1 Rabbit Polyclonal Antibody

OPR3572

Reactivity	H,M	Storage	-20°C, Avoid freeze / thaw cycles
Host	Rabbit	Applications	WB; IHC; IF; ELISA
Isotype	IgG	Concentration	1 mg/mL

Note: Centrifuge before opening to ensure complete recovery of vial contents.

Images



Western blot analysis of lysates from HUVEC, COLO205, and 293 cells, using TCF7 Antibody. The lane on the right is blocked with the synthesized peptide



Immunohistochemical analysis of paraffin-embedded human Small intestinal stromal tumor. 1, Tris-EDTA, pH9.0 was used for antigen retrieval. 2, antibody was diluted at 1:200 (4°C overnight). 3, Secondary antibody was diluted at 1:200 (room temperature, 45 minutes).

Immunogen Information

Immunogen	The antiserum was produced against synthesized peptide derived from human TCF7. AA range:10-59
Swissprot	P36402
Synonyms	TCF7; TCF1; Transcription factor 7; TCF-7; T-cell-specific transcription factor 1; T-cell factor 1; TCF-1.

Product Information

Observed MW	42kD
Buffer	PBS containing 50% glycerol, 0.5% BSA and 0.02% sodium azide.
Dilution	WB: 1/500 - 1/2000, IHC: 1/100 - 1/300, ELISA: 1/10000

Other applications have not been tested. Optimal dilutions/concentrations should be determined by the end user

Background

Alternative products:2 series of isoforms, L and S, are produced by use of alternative promoter usage. Additional isoforms seem to exist, function. Transcriptional activator involved in T-cell lymphocyte differentiation. Necessary for the survival of CD4(+) CD8(+) immature thymocytes. Isoforms lacking the N-terminal CTNNB1 binding domain cannot fulfill this role. Binds to the T-lymphocyte-specific enhancer element (5'-WWCAAAG-3') found in the promoter of the CD3E gene. May also act as feedback transcriptional repressor of CTNNB1 and TCF7L2 target genes. TLE1, TLE2, TLE3 and TLE4 repress transactivation mediated by TCF7 and CTNNB1., induction:By TCF7L2 and CTNNB1., sequence caution: Wrong choice of frame., similarity: Belongs to the TCF/LEF family., similarity: Contains 1 HMG box DNA-binding domain., subunit: Binds the armadillo repeat of CTNNB1 and forms a stable complex. Interacts with AES, TLE1, TLE2, TLE3 and TLE4., tissue specificity: Predominantly in T-cells. Also detected in proliferating intestinal epithelial cells and in the basal epithelial cells of mammary gland epithelium.

Research Use

For research use only, not for use in diagnostic procedure

Legend

Applications: WB- Western Blot; IHC- Immunohistochemistry; IF- Immunofluorescence; IP- Immunoprecipitation; FC-Flow cytometry; ChIP-Chromatin Immunoprecipitation

Reactivity: H-Human; R-Rat; M-Mouse; Mk-Monkey; Dg-Dog; Ch-Chicken; Hm-Hamster; Rb-Rabbit; Sh- Sheep; Pg-Pig; Z- Zebrafish; X-Xenopus; C-Cow,Is-Insect,Ys- yeast.

Please contact Origin Diagnostics and Research for further assistance

www.originlab.in

info@originlab.in

+91-7736237778