

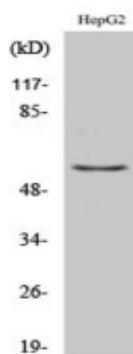
# Tyrosine Hydroxylase Rabbit Polyclonal Antibody

OPR3600

|                   |        |                      |                                  |
|-------------------|--------|----------------------|----------------------------------|
| <b>Reactivity</b> | H,M,R  | <b>Storage</b>       | -20°C, Avoid freeze/ thaw cycles |
| <b>Host</b>       | Rabbit | <b>Applications</b>  | WB;IHC;IF;ELISA                  |
| <b>Isotype</b>    | IgG    | <b>Concentration</b> | 1 mg/mL                          |

Note: Centrifuge before opening to ensure complete recovery of vial contents.

## Images



Western Blot analysis of various cells using TH Polyclonal Antibody.



Immunofluorescence analysis of HUVEC cells, using Tyrosine Hydroxylase Antibody. The picture on the right is blocked with the synthesized peptide.

## Immunogen Information

|                  |  |
|------------------|--|
| <b>Immunogen</b> | The antiserum was produced against synthesized peptide derived from human Tyrosine Hydroxylase. AA range:41-90 |
| <b>Swissprot</b> | P07101   |
| <b>Synonyms</b>  | TH; TYH; Tyrosine 3-monooxygenase; Tyrosine 3-hydroxylase; TH  |

## Product Information

|                    |   |
|--------------------|---|
| <b>Observed MW</b> | 55 kDa  |
| <b>Buffer</b>      | PBS containing 50% glycerol, 0.5% BSA and 0.02% sodium azide        |
| <b>Dilution</b>    | WB: 1/500- 1/2000;IHC: 1/100- 1/300; IF:1/200-1/1000;ELISA: 1/20000 |

Other applications have not been tested. Optimal dilutions/concentrations should be determined by the end user.

## Background

The protein encoded by this gene is involved in the conversion of tyrosine to dopamine. It is the rate-limiting enzyme in the synthesis of catecholamines, hence plays a key role in the physiology of adrenergic neurons. Mutations in this gene have been associated with autosomal recessive Segawa syndrome. Alternatively spliced transcript variants encoding different isoforms have been noted for this gene.

## Research Use

For research use only, not for use in diagnostic procedure.

## Legend

Applications: WB-Western Blot; IHC-Immunohistochemistry; IF-Immunofluorescence; IP-Immunoprecipitation; FC-Flow cytometry;ChIP-Chromatin Immunoprecipitation

Reactivity: H-Human; R-Rat; M-Mouse; Mk-Monkey; Dg-Dog; Ch-Chicken; Hm-Hamster; Rb-Rabbit; Sh- Sheep; Pg-Pig; Z-Zebrafish;X-Xenopus; C-Cow.

Please contact Origin Diagnostics and Research for further assistance

[www.originlab.in](http://www.originlab.in)

[info@originlab.in](mailto:info@originlab.in)

+91-7736237778