

PROMPT-10+ Pre-stained Protein ladder (10 pre-stained bands, 10-180 kDa)

PM4-11-500

Description: This product contains 10 color pre-stained known molecular weight standard proteins, the molecular weight range is 10 kDa – 180 kDa, and the content of each protein is about 0.2-0.4mg/ml. Pre-stained markers can be used to directly observe the status of protein electrophoresis and clearly judge the transfer effect of Western Blot. After SDS-PAGE gel electrophoresis or transfer to PVDF or NC membrane, 10 clear colored protein bands can be obtained, of which 25 kDa is a green band, 75 kDa is a red band, and the remaining 8 are blue bands.

Volume: 250μl

Recommendations:

1. This product is a ready-to-use liquid, which can be directly loaded for electrophoresis. No heating, dilution or addition of reducing agents is required prior to sample loading.
2. When 5 μL of sample is loaded, clear rainbow bands can be seen during SDS-PAGE electrophoresis and after transfer to the membrane.
3. The recommended separation gel concentration is 15%.

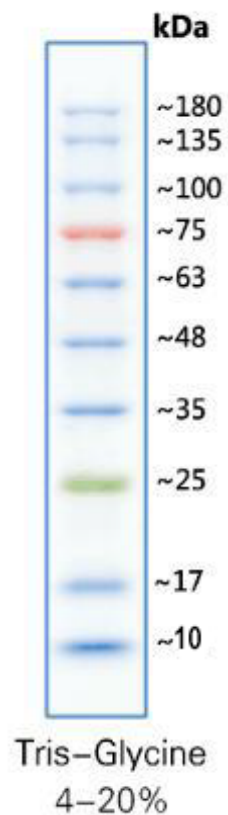
The product is for research only, not for diagnostic and clinical use.

Storage: 4°C for 3 months (For long term storage, store at -20°C)

Precautions:

1. This product contains a relatively high concentration of glycerin, and it can be stored in a liquid state at -20°C and can be used directly. If the temperature of the refrigerator is unstable, resulting in freezing, it can be properly divided and stored at 4°C, which will be stable for at least 6 months.
2. Marker separation effect is related to PAGE gel concentration. If the separation gel concentration is lower than 15%, bands below 25 kDa are not easy to separate, but green (25kDa) and above bands are not affected. If the target band is less than 25 kDa, it is recommended that the separation gel concentration be greater than or equal to 15%.

3. The transfer effect is related to the transfer time, which depends on the size of the target band of the customer. If some of the larger molecular weight bands have not been successfully transferred after transfer, it is normal.
4. When performing SDS-PAGE, the mobility of protein marker bands will be affected by the composition of the medium used, the percentage of polyacrylamide gel, voltage, electrophoresis time and whether pre-electrophoresis is performed.



Please contact Origin Diagnostics and Research for further assistance

www.originlab.in

info@originlab.in

+91-7736237778

