

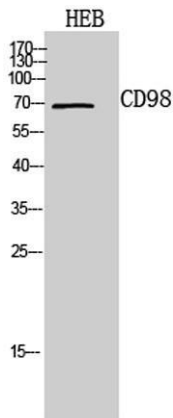
CD98 Rabbit Polyclonal Antibody

OPR4329

Reactivity	H,M,R	Storage	-20 °C, Avoid freeze/ thaw cycles
Host	Rabbit	Applications	WB;ELISA
Isotype	IgG	Concentration	1mg/mL

Note: Centrifuge before opening to ensure complete recovery of vial contents.

Images



Western Blot analysis of HEB cells using CD98 Polyclonal Antibody. Secondary antibody was diluted at 1:20000

Immunogen Information

Immunogen The antiserum was produced against synthesized peptide derived from the C-terminal region of human SLC3A2. AA range:491-540

Swissprot P08195

Synonyms SLC3A2; MDU1; 4F2 cell-surface antigen heavy chain; 4F2hc; 4F2 heavy chain antigen; Lymphocyte activation antigen 4F2 large subunit; CD98

Product Information

Observed MW 69kD

Buffer Liquid in PBS containing 50% glycerol, 0.5% BSA and 0.02% sodium azide.

Dilution WB: 1/500 - 1/2000. ELISA: 1/10000.

Other applications have not been tested. Optimal dilutions/concentrations should be determined by the end user.

Background

This gene is a member of the solute carrier family and encodes a cell surface, transmembrane protein. The protein exists as the heavy chain of a heterodimer, covalently bound through di-sulfide bonds to one of several possible light chains. The encoded transporter plays a role in regulation of intracellular calcium levels and transports L-type amino acids. Alternatively spliced transcript variants, encoding different isoforms, have been characterized

Research Use

For research use only, not for use in diagnostic procedure.

Legend

Applications: WB-Western Blot; IHC-Immunohistochemistry; IF-Immunofluorescence; IP-Immunoprecipitation; FC-Flow cytometry; ChIP-Chromatin Immunoprecipitation

Reactivity: H-Human; R-Rat; M-Mouse; Mk-Monkey; Dg-Dog; Ch-Chicken; Hm-Hamster; Rb-Rabbit; Sh- Sheep; Pg-Pig; Z-Zebrafish; X-Xenopus; C-Cow.

Please contact Origin Diagnostics and Research for further assistance

www.originlab.in

info@originlab.in

+91-7736237778