

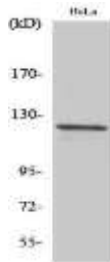
# Vinculin Rabbit Polyclonal Antibody

OPR3700

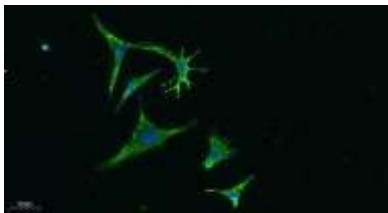
<b>Reactivity</b>	H, M, R	<b>Storage</b>	-20°C, Avoid freeze / thaw cycles
<b>Host</b>	Rabbit	<b>Applications</b>	WB; IHC; IF; ELISA
<b>Isotype</b>	IgG	<b>Concentration</b>	1 mg/mL

**Note:** Centrifuge before opening to ensure complete recovery of vial contents.

## Images



Western Blot analysis of various cells using Vinculin Polyclonal Antibody was diluted at 1:20000



Immunofluorescence analysis of A549. 1, Primary Antibody was diluted at 1:200 (4°C overnight). 2, Goat Anti Rabbit IgG (H&L) - Alexa Fluor 488 Secondary antibody was diluted at 1:1000 (room temperature, 50 minutes). 3, Picture B: DAPI (blue) 10 minutes.

## Immunogen Information

<b>Immunogen</b>	The antiserum was produced against synthesized peptide derived from human Vinculin. AA range:786-835
<b>Swissport</b>	P18206
<b>Synonyms</b>	VCL; Vinculin; Metavinculin

## Product Information

<b>Observed MW</b>	123kD
<b>Buffer</b>	PBS containing 50% glycerol, 0.5% BSA and 0.02% sodium azide.
<b>Dilution</b>	WB:-1/500-1/2000, IHC-p:- 1:100 – 300, ELISA:- 1/20000, IF:- 1:100 -300

Other applications have not been tested. Optimal dilutions/concentrations should be determined by the end user

## Background

Vinculin is a cytoskeletal protein associated with cell-cell and cell-matrix junctions, where it is thought to function as one of several interacting proteins involved in anchoring F-actin to the membrane. Defects in VCL are the cause of cardiomyopathy dilated type 1W. Dilated cardiomyopathy is a disorder characterized by ventricular dilation and impaired systolic function, resulting in congestive heart failure and arrhythmia. Multiple alternatively spliced transcript variants have been found for this gene, but the biological validity of some variants has not been determined.

## Research Use

For research use only, not for use in diagnostic procedure

## Legend

Applications: WB-Western Blot; IHC-Immunohistochemistry; IF-Immunofluorescence; IP-Immunoprecipitation; FC-Flow cytometry; CHIP-Chromatin Immunoprecipitation

Reactivity: H-Human; R-Rat; M-Mouse; Mk-Monkey; Dg-Dog; Ch-Chicken; Hm-Hamster; Rb-Rabbit; Sh- Sheep; Pg-Pig; Z- Zebrafish; X-Xenopus; C-Cow,Is-Insect, Ys- yeast.

Please contact Origin Diagnostics and Research for further assistance

[www.originlab.in](http://www.originlab.in)

[info@originlab.in](mailto:info@originlab.in)

+91-7736237778



ISO 9001:2015

ISO 13485:2014