

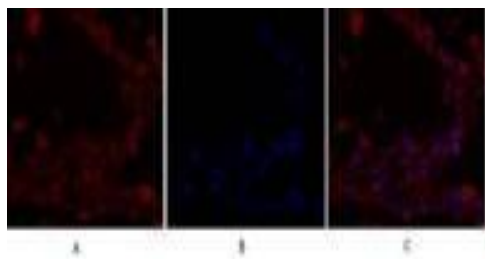
# IRS-1 Rabbit Polyclonal Antibody

OPR2646

<b>Reactivity</b>	H, M, R, Pg	<b>Storage</b>	-20°C, Avoid freeze/ thaw cycles
<b>Host</b>	Rabbit	<b>Applications</b>	WB; IHC; IF; ELISA
<b>Isotype</b>	IgG	<b>Concentration</b>	1 mg/mL

**Note:** Centrifuge before opening to ensure complete recovery of vial contents.

## Images



Immunofluorescence analysis of human-lung tissue. 1, IRS-1 Polyclonal Antibody (red) was diluted at 1:200 (4°C, overnight). 2, Cy3 labeled Secondary antibody was diluted at 1:300 (room temperature, 50 minutes). 3, Picture B: DAPI (blue) 10 minutes.

## Immunogen Information

**Immunogen** The antiserum was produced against synthesized peptide derived from human IRS-1.  
AA range:603-652

**Swissprot** P35568  
**Synonyms** IRS1; Insulin receptor substrate 1; IRS-1

## Product Information

**Observed MW** 170kD

**Buffer** PBS containing 50% glycerol, 0.5% BSA and 0.02% sodium azide

**Dilution** WB:1/500-1/2000; IHC:1/100-1/300; ELISA:1/20000; IF:1/200-1/1000

Other applications have not been tested. Optimal dilutions/concentrations should be determined by the end user.

## Background

This gene encodes a protein which is phosphorylated by insulin receptor tyrosine kinase. Mutations in this gene are associated with type II diabetes and susceptibility to insulin resistance.

## Research Use

For research use only, not for use in diagnostic procedure.

## Legend

Applications: WB-Western Blot; IHC-Immunohistochemistry; IF-Immunofluorescence; IP-Immunoprecipitation; FC-Flow cytometry; ChIP-Chromatin Immunoprecipitation

Reactivity: H-Human; R-Rat; M-Mouse; Mk-Monkey; Dg-Dog; Ch-Chicken; Hm-Hamster; Rb-Rabbit; Sh- Sheep; Pg-Pig; Z- Zebrafish; X-Xenopus; C-Cow, Fs- fish.

Please contact Origin Diagnostics and Research for further assistance

[www.originlab.in](http://www.originlab.in)

[info@originlab.in](mailto:info@originlab.in)

+91-7736237778