

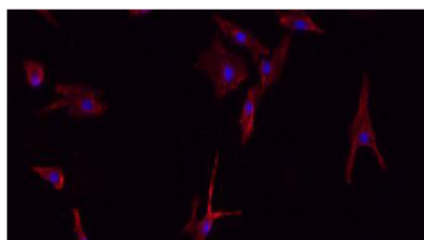
NOS2 Rabbit Polyclonal Antibody

OPR2973

Reactivity	H,R,M	Storage	-20°C, Avoid freeze / thaw cycles.
Host	Rabbit	Applications	IF;WB;IHC;ELISA
Isotype	IgG	Concentration	1 mg/mL

Note: Centrifuge before opening to ensure complete recovery of vial contents.

Images



Immunofluorescence analysis of A549. 1, primary Antibody (red) was diluted at 1:200(4°C overnight). 2, Goat Anti Rabbit IgG (H&L) - Alexa Fluor 594 Secondary antibody was diluted at 1:1000(room temperature, 50 min).3, Picture B: DAPI(blue) 10 min.

Immunogen Information

Immunogen	The antiserum was produced against synthesized Peptide derived from human iNOS. AA range:117-166
Swissprot	P35228
Synonyms	NOS2; NOS2A; Nitric oxide synthase; inducible; Hepatocyte NOS; HEP-NOS; Inducible NO synthase; Inducible NOS; iNOS; NOS type II; Peptidyl-cysteine S-nitrosylase NOS2

Product Information

Observed MW	131 kDa
Buffer	PBS containing 50% glycerol, 0.5% BSA and 0.02% sodium azide.
Dilution	IF: 1:50-200, WB 1:500-2000, ELISA 1:10000-20000, IHC 1:50-300.

Other applications have not been tested. Optimal dilutions/concentrations should be determined by the end user

Background

Nitric oxide is a reactive free radical which acts as a biologic mediator in several processes, including neurotransmission and antimicrobial and antitumoral activities. This gene encodes a nitric oxide synthase which is expressed in liver and is inducible by a combination of lipopolysaccharide and certain cytokines. Three related pseudogenes are located within the Smith-Magenis syndrome region on chromosome 17.

Research Use

For research use only, not for use in diagnostic procedure

Legend

Applications: WB-Western Blot; IHC-Immunohistochemistry; IF-Immunofluorescence; IP-Immunoprecipitation; FC-Flow cytometry; ChIP-Chromatin Immunoprecipitation

Reactivity: H-Human; R-Rat; M-Mouse; Mk-Monkey; Dg-Dog; Ch-Chicken; Hm-Hamster; Rb-Rabbit; Sh- Sheep; Pg-Pig; Z-Zebrafish; X-Xenopus; C-Cow.

Please contact Origin Diagnostics and Research for further assistance

www.originlab.in

info@originlab.in

+91-7736237778