

EP-CAM Rabbit Polyclonal Antibody

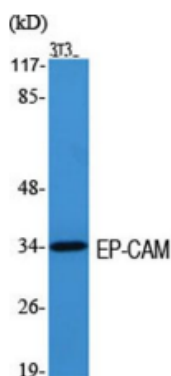
OPR2269

Reactivity H, M, R
Host Rabbit
Isotype IgG

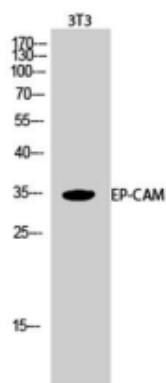
Storage -20°C, Avoid freeze / thaw cycles
Applications WB;IF;ELISA
Concentration 1 mg/mL

Note: Centrifuge before opening to ensure complete recovery of vial contents.

Images



Western Blot analysis of various cells using EP-CAM Polyclonal Antibody diluted at 1:2000



Western Blot analysis of 3T3 cells using EP-CAM Polyclonal Antibody diluted at 1:2000

Immunogen Information

Immunogen The antiserum was produced against synthesized peptide derived from human TACD1. AA range:116-165
Swissprot P16422
Synonyms EPCAM; GA733-2; M1S2; M4S1; MIC18; TACSTD1; TROP1; Epithelial cell adhesion molecule; Ep-CAM; Adenocarcinoma-associated antigen; Cell surface glycoprotein Trop-1; Epithelial cell surface antigen;

Product Information

Observed MW 34 kDa
Buffer PBS containing 50 % glycerol, 0.5% BSA and 0.02% sodium azide.
Dilution WB: 1/500 - 1/2000, IF: 1/200 - 1/1000, ELISA: 1/5000.

Other applications have not been tested. Optimal dilutions/concentrations should be determined by the end user

Background

This gene encodes a carcinoma-associated antigen and is a member of a family that includes at least two type I membrane proteins. This antigen is expressed on most normal epithelial cells and gastrointestinal carcinomas and functions as a homotypic calcium-independent cell adhesion molecule. The antigen is being used as a target for immunotherapy treatment of human carcinomas. Mutations in this gene result in congenital tufting enteropathy

Research Use

For research use only, not for use in diagnostic procedure

Legend

Applications: WB-Western Blot; IHC-Immunohistochemistry; IF-Immunofluorescence; IP-Immunoprecipitation; FC-Flow cytometry; ChIP-Chromatin Immunoprecipitation

Reactivity: H-Human; R-Rat; M-Mouse; Mk-Monkey; Dg-Dog; Ch-Chicken; Hm-Hamster; Rb-Rabbit; Sh- Sheep; Pg-Pig; Z-Zebrafish; X-Xenopus; C-Cow.

Please contact Origin Diagnostics and Research for further assistance

www.originlab.in

info@originlab.in

+91-7736237778