

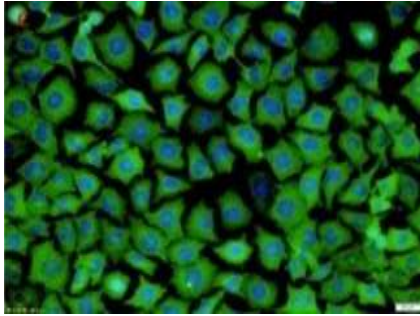
Goat Anti-Rat IgG -FITC Conjugated

OPS062

Storage	-20°C, Avoid freeze / thaw cycles
Applications	IF
Concentration	3-5mg/mL

Note: Centrifuge before opening to ensure complete recovery of vial contents.

Images



Goat anti-mouse IgG/FITC was used at 1:200 in phosphate buffered saline containing 0.2% BSA for 45 minutes at room temperature, for detection of β -Tubulin in the cytoplasm (green). Nuclei (blue) were stained with DAPI.

Product Information

Buffer	0.01M PBS (pH 7.4) with 1% BSA, 0.03% Proclin and 50% glycerol, pH 7.4
Purification method	Protein A/G
Dilution	IF: 1: 50 – 500 (E_x/E_m :495nm/525nm)

Other applications have not been tested. Optimal dilutions/concentrations should be determined by the end user

Background

FITC conjugated antibody is a kind of immunochemistry reagents widely used in immunology, molecular biology and various branches of clinical medicine. The immune serums are purified by affinity chromatography to obtain high-purity IgG. Using direct labeling method, the FITC is covalently cross-linked to the lysine group of the antibody IgG molecule.

Research Use

For research use only, not for use in diagnostic procedure

Legend

Applications: WB-Western Blot; IHC-Immunohistochemistry; IF-Immunofluorescence; IP-Immunoprecipitation; FC-Flow cytometry; ChIP-Chromatin Immunoprecipitation

Reactivity: H-Human; R-Rat; M-Mouse; Mk-Monkey; Dg-Dog; Ch-Chicken; Hm-Hamster; Rb-Rabbit; Sh- Sheep; Pg-Pig; Z- Zebrafish; X-Xenopus; C-Cow,Fs- fish.

Please contact Origin Diagnostics and Research for further assistance

www.originlab.in

info@originlab.in

+91-7736237778