

TNF- α Rabbit Polyclonal Antibody

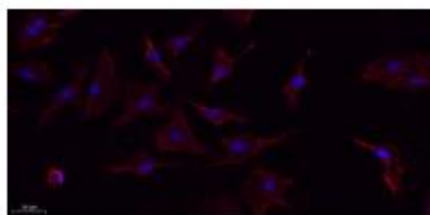
OPR3623

Reactivity H,M,R
Host Rabbit
Isotype IgG

Storage -20°C, Avoid freeze / thaw cycles
Applications WB, IHC, IF, ELISA
Concentration 1 mg/mL

Note: Centrifuge before opening to ensure complete recovery of vial contents.

Images



Immunofluorescence analysis of A549. 1, primary Antibody (red) was diluted at 1:200(4°C overnight). 2, Goat Anti Rabbit IgG (H&L) - Alexa Fluor 594 Secondary antibody was diluted at 1:1000(room temperature, 50 min).3, Picture B: DAPI(blue) 10 min.

Immunogen Information

Immunogen The antiserum was produced against synthesized peptide derived from human TNFA.
AA range:141-190
Swiss prot P01375
Synonyms TNF; TNFA; TNFSF2; Tumor necrosis factor; Cachectin; TNF-alpha; Tumor necrosis factor ligand superfamily member 2; TNF-a

Product Information

Observed MW 16 kDa
Buffer PBS containing 50% glycerol, 0.5% BSA and 0.02% sodium azide.
Dilution WB: 1/500 - 1/2000, IHC-p: 1:100-300, ELISA: 1/20000, IF 1:100-300.

Other applications have not been tested. Optimal dilutions/concentrations should be determined by the end user

Background

This gene encodes a multifunctional proinflammatory cytokine that belongs to the tumor necrosis factor (TNF) superfamily. This cytokine is mainly secreted by macrophages. It can bind to, and thus functions through its receptors TNFRSF1A/TNFR1 and TNFRSF1B/TNFR2. This cytokine is involved in the regulation of a wide spectrum of biological processes including cell proliferation, differentiation, apoptosis, lipid metabolism, and coagulation. This cytokine has been implicated in a variety of diseases, including autoimmune diseases, insulin resistance, and cancer. Knockout studies in mice also suggested the neuroprotective function of this cytokine

Research Use

For research use only, not for use in diagnostic procedure

Legend

Applications: WB-Western Blot; IHC-Immunohistochemistry; IF-Immunofluorescence; IP-Immunoprecipitation; FC-Flow cytometry; ChIP-Chromatin Immunoprecipitation

Reactivity: H-Human; R-Rat; M-Mouse; Mk-Monkey; Dg-Dog; Ch-Chicken; Hm-Hamster; Rb-Rabbit; Sh- Sheep; Pg-Pig; Z-Zebrafish; X-Xenopus; C-Cow, Is-Insect, Ys- yeast.

Please contact Origin Diagnostics and Research for further assistance

www.originlab.in

info@originlab.in

+91-7736237778