

# TNF- $\alpha$ Rabbit Polyclonal Antibody

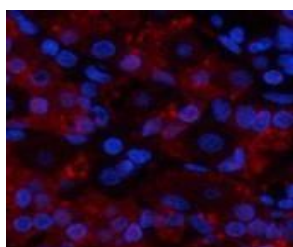
OPR3623

**Reactivity** H,M,R  
**Host** Rabbit  
**Isotype** IgG

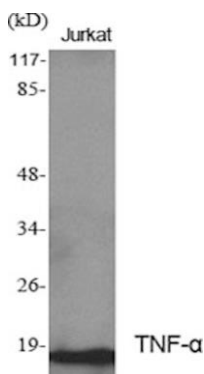
**Storage** -20°C, Avoid freeze/ thaw cycles  
**Applications** WB; IHC; IF  
**Concentration** 1mg/mL

**Note:** Centrifuge before opening to ensure complete recovery of vial contents.

## Images



Immunofluorescence analysis of Human stomach tissue using TNF alpha Polyclonal Antibody at dilution of 1:200.



Western Blot analysis of Jurkat cells with TNF alpha Polyclonal Antibody.

## Immunogen Information

**Immunogen** Synthesized peptide derived from the Internal region of Human TNF- $\alpha$ .  
**Swissport** P01375  
**Synonyms** TNF; TNFA; TNFSF2; Tumor necrosis factor; Cachectin; TNF-alpha; Tumor necrosis factor ligand superfamily member 2; TNF-  $\alpha$ .

## Product Information

**Observed MW** 16 kDa  
**Calculated MW** 26 kDa  
**Buffer** Phosphate buffered solution, pH 7.4, containing 0.05% stabilizer, 0.5% protein protectant and 50% glycerol.  
**Dilution** WB:- 1:500 -1:2000, IHC:- 1:100-1:300, IF:- 1:200 - 1:1000

Other applications have not been tested. Optimal dilutions/concentrations should be determined by the end user.

## Background

Cytokine that binds to TNFRSF1A/TNFR1 and TNFRSF1B/TNFR2. It is mainly secreted by macrophages and can induce cell death of certain tumor cell lines. It is potent pyrogen causing fever by direct action or by stimulation of interleukin-1 secretion and is implicated in the induction of cachexia. Under certain conditions, it can stimulate cell proliferation and induce cell differentiation.

## Research Use

For research use only, not for use in diagnostic procedure.

## Legend

Applications: WB-Western Blot; IHC-Immunohistochemistry; IF-Immunofluorescence; IP-Immunoprecipitation; FC-Flow cytometry;ChIP-Chromatin Immunoprecipitation

Reactivity: H-Human; R-Rat; M-Mouse; Mk-Monkey; Dg-Dog; Ch-Chicken; Hm-Hamster; Rb-Rabbit; Sh- Sheep; Pg-Pig; Z- Zebrafish;X-Xenopus; C-Cow.

Please contact Origin Diagnostics and Research for further assistance

[www.originlab.in](http://www.originlab.in)

[info@originlab.in](mailto:info@originlab.in)

+91-7736237778