

SAE1 Rabbit Polyclonal Antibody

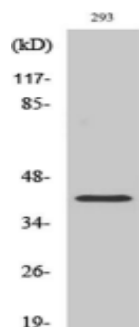
OPR3404

Reactivity H,M,R
Host Rabbit
Isotype IgG

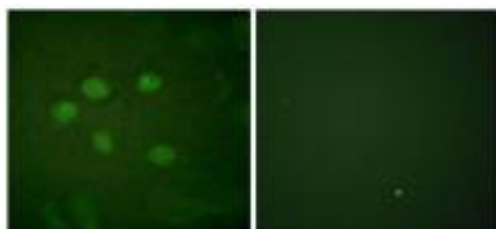
Storage -20 °C, Avoid freeze/ thaw cycles
Applications WB;IHC;IF;ELISA
Concentration 1 mg/mL

Note: Centrifuge before opening to ensure complete recovery of vial contents.

Images



Western Blot analysis of various cells using SAE1 Polyclonal Antibody cells nucleus extracted by Minute TM Cytoplasmic and Nuclear Fractionation kit



Immunofluorescence analysis of HUVEC cells, using AOS1 Antibody. The picture on the right is blocked with the synthesized peptide

Immunogen Information

Immunogen The antiserum was produced against synthesized peptide derived from human AOS1.
AA range:221-270

Swissprot Q9UBE0

Synonyms SAE1; AOS1; SUA1; UBLE1A; SUMO-activating enzyme subunit 1; Ubiquitin-like 1-activating enzyme E1A

Product Information

Observed MW 38 kDa

Buffer PBS containing 50% glycerol, 0.5% BSA and 0.02% sodium azide

Dilution WB:1/500-1/2000.;IHC:1/100-1/300;IF:1/200-1/1000
ELISA:1/20000

Other applications have not been tested. Optimal dilutions/concentrations should be determined by the end user.

Background

SUMO1 activating enzyme subunit 1(SAE1) Homosapiens Posttranslational modification of proteins by the addition of the small protein SUMO (see SUMO1; MIM 601912), or sumoylation, regulates protein structure and intracellular localization. SAE1 and UBA2 (MIM 613295) form a heterodimer that functions as a SUMO-activating enzyme for the sumoylation of proteins.

Research Use

For research use only, not for use in diagnostic procedure.

Legend

Applications: WB-Western Blot; IHC-Immunohistochemistry; IF-Immunofluorescence; IP-Immunoprecipitation; FC-Flow cytometry;ChIP-Chromatin Immunoprecipitation

Reactivity: H-Human; R-Rat; M-Mouse; Mk-Monkey; Dg-Dog; Ch-Chicken; Hm-Hamster; Rb-Rabbit; Sh- Sheep; Pg-Pig; Z-Zebrafish;X-Xenopus; C-Cow.

Please contact Origin Diagnostics and Research for further assistance

www.originlab.in

info@originlab.in

+91-7736237778