

Fibronectin Mouse Monoclonal Antibody

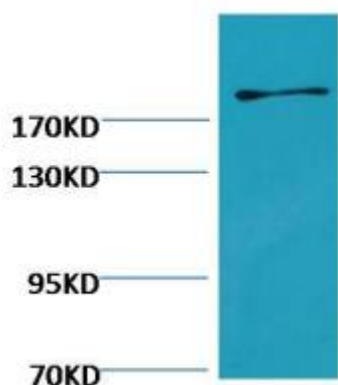
OPM1137

Reactivity H, M, R
Host Mouse
Isotype IgG1

Storage -20°C, Avoid freeze / thaw cycles
Applications WB, IHC
Concentration 1 mg/mL

Note: Centrifuge before opening to ensure complete recovery of vial contents.

Images



Western blot analysis of Hela with OPM1137 diluted at: 2000



Immunohistochemical analysis of paraffin-embedded Mouse Kidney Tissue using Fibronectin Mouse mAb diluted at: 500.

Immunogen Information

Immunogen Synthetic Peptide
Swissprot P02751
Synonyms CIG Cold insoluble globulin fibronectin FN fN1 FNZ GFND GFND2 Ugi-Y3

Product Information

Observed MW 285 kDa
Buffer PBS with 0.02% sodium azide and 50% glycerol pH 7.4.
Dilution WB:1/1000-2000,IHC:1/200-500

Other applications have not been tested. Optimal dilutions/concentrations should be determined by the end user

Background

Fibronectin is a high-molecular weight glycoprotein of the extracellular matrix that binds to membrane-spanning receptor proteins called integrins. Similar to integrins fibronectin binds extracellular matrix components such as collagen. Fibronectin exists as a protein dimer consisting of two nearly identical monomers linked by a pair of disulfide bonds. The fibronectin protein is produced from a single gene but alternative splicing of its pre-mRNA leads to the creation of several isoforms

Research Use

For research use only, not for use in diagnostic procedure

Legend

Applications: WB-Western Blot; IHC-Immunohistochemistry; IF-Immunofluorescence; IP-Immunoprecipitation; FC-Flow cytometry; ChIP-Chromatin Immunoprecipitation

Reactivity: H-Human; R-Rat; M-Mouse; Mk-Monkey; Dg-Dog; Ch-Chicken; Hm-Hamster; Rb-Rabbit; Sh- Sheep; Pg-Pig; Z-Zebrafish; X-Xenopus; C-Cow.

Please contact Origin Diagnostics and Research for further assistance

www.originlab.in

info@originlab.in

+91-7736237778