

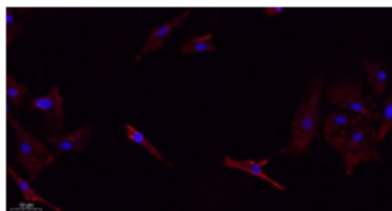
# Bax Rabbit Polyclonal Antibody

OPR6947

<b>Reactivity</b>	H,M,R,Ch	<b>Storage</b>	-20°C, Avoid freeze / thaw cycles
<b>Host</b>	Rabbit	<b>Applications</b>	IHC,IF,ELISA,WB
<b>Isotype</b>	IgG	<b>Concentration</b>	1 mg/mL

Note: Centrifuge before opening to ensure complete recovery of vial contents.

## Images



Immunofluorescence analysis of A549. 1,primary Antibody(red) was diluted at 1:200(4°C overnight). 2, Goat Anti Rabbit IgG (H&L) - Alexa Fluor 594 Secondary antibody was diluted at 1:1000(room temperature, 50 min).3, Picture B: DAPI(blue) 10 min.

## Immunogen Information

<b>Immunogen</b>	The antiserum was produced against synthesized peptide derived from human BAX. AA range:80-129
<b>Swissprot</b>	Q07812

## Product Information

<b>Buffer</b>	PBS containing 50% glycerol, 0.5% BSA and 0.02% sodium azide.
<b>Dilution</b>	WB: 1/500 - 1/2000, IHC-p: 1:100-300 , ELISA: 1/20000, IF 1:100-300

Other applications have not been tested. Optimal dilutions/concentrations should be determined by the end user

## Background

The protein encoded by BAX (BCL2 associated X, apoptosis regulator) belongs to the BCL2 protein family. BCL2 family members form hetero- or homodimers and act as anti- or pro-apoptotic regulators that are involved in a wide variety of cellular activities. This protein forms a heterodimer with BCL2, and functions as an apoptotic activator. This protein is reported to interact with, and increase the opening of, the mitochondrial voltage-dependent anion channel (VDAC), which leads to the loss in membrane potential and the release of cytochrome c. The expression of this gene is regulated by the tumor suppressor P53 and has been shown to be involved in P53-mediated apoptosis. Multiple alternatively spliced transcript variants, which encode different isoforms, have been reported for BAX.

## Research Use

For research use only, not for use in diagnostic procedure

## Legend

Applications: WB-Western Blot; IHC-Immunohistochemistry; IF-Immunofluorescence; IP-Immunoprecipitation; FC-Flow cytometry; ChIP-Chromatin Immunoprecipitation

Reactivity: H-Human; R-Rat; M-Mouse; Mk-Monkey; Dg-Dog; Ch-Chicken; Hm-Hamster; Rb-Rabbit; Sh- Sheep; Pg-Pig; Z-Zebrafish; X-Xenopus; C-Cow.

Please contact Origin Diagnostics and Research for further assistance

[www.originlab.in](http://www.originlab.in)

[info@originlab.in](mailto:info@originlab.in)

+91-7736237778