

CD45 Rabbit Polyclonal Antibody

OPR6942

Reactivity H,M,R

Host Rabbit

Isotype IgG

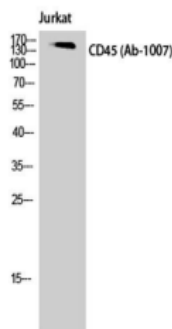
Storage -20 °C, Avoid freeze/ thaw cycles

Applications WB;IHC;IF;ELISA

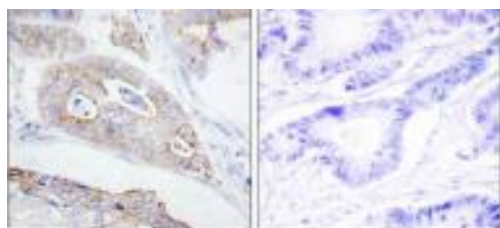
Concentration 1 mg/mL

Note: Centrifuge before opening to ensure complete recovery of vial contents.

Images



Western Blot analysis of Jurkat cells using CD45 Polyclonal Antibody.



Immunohistochemistry analysis of paraffin-embedded human colon carcinoma tissue, using CD45 Antibody. The picture on the right is blocked with the synthesized peptide.

Immunogen Information

Immunogen The antiserum was produced against synthesized peptide derived from human CD45.

AA range:981-1030

Swissprot P08575

Synonyms PTPRC; CD45; Receptor-type tyrosine-protein phosphatase C; Leukocyte common antigen; L-CA; T200; CD antigen CD45

Product Information

Observed MW 147 kDa

Buffer PBS containing 50% glycerol, 0.5% BSA and 0.02% sodium azide

Dilution WB:1/500-1/2000;IHC-p:1:100-300;IF:1:100-300; ELISA: 1/20000

Other applications have not been tested. Optimal dilutions/concentrations should be determined by the end user.

Background

The protein encoded by this gene is a member of the protein tyrosine phosphatase (PTP) family. PTPs are known to be signaling molecules that regulate a variety of cellular processes including cell growth, differentiation, mitosis, and oncogenic transformation. This PTP contains an extracellular domain, a single transmembrane segment and two tandem intracytoplasmic catalytic domains, and thus is classified as a receptor type PTP. This PTP has been shown to be an essential regulator of T- and B-cell antigen receptor signaling. It functions through either direct interaction with components of the antigen receptor complexes, or by activating various Src family kinases required for the antigen receptor signaling. This PTP also suppresses JAK kinases, and thus functions as a regulator of cytokine receptor signaling.

Research Use

For research use only, not for use in diagnostic procedure.

Legend

Applications: WB-Western Blot; IHC-Immunohistochemistry; IF-Immunofluorescence; IP-Immunoprecipitation; FC-Flow cytometry;ChIP-Chromatin Immunoprecipitation

Reactivity: H-Human; R-Rat; M-Mouse; Mk-Monkey; Dg-Dog; Ch-Chicken; Hm-Hamster; Rb-Rabbit; Sh- Sheep; Pg-Pig; Z-

Please contact Origin Diagnostics and Research for further assistance

www.originlab.in

info@originlab.in

+91-7736237778

Please contact Origin Diagnostics and Research for further assistance

www.originlab.in

info@originlab.in

+91-7736237778

