

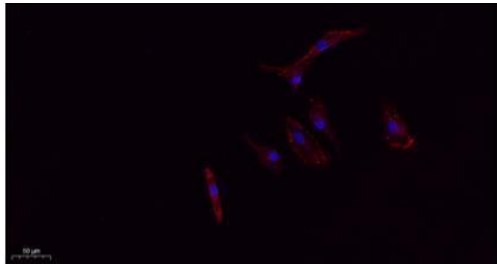
CD63 Rabbit Polyclonal Antibody

OPR4255

Reactivity	H,M,R	Storage	-20°C, Avoid freeze/ thaw cycles
Host	Rabbit	Applications	WB;IHC;IF;ELISA
Isotype	IgG	Concentration	1mg/mL

Note: Centrifuge before opening to ensure complete recovery of vial contents.

Images



Immunofluorescence analysis of A549. 1, Primary Antibody (red) was diluted at 1:200 (4°C overnight). 2, Goat Anti Rabbit IgG (H&L) - Alexa Fluor 594 Secondary Antibody was diluted at 1:1000 (room temperature, 50 minutes). 3, Picture B: DAPI (blue) 10 minutes.

Immunogen Information

Immunogen The antiserum was produced against synthesized peptide derived from the Internal region of human CD63. AA range:121-170

Swissprot P08962

Synonyms CD63; MLA1; TSPAN30; CD63 antigen; Granulophysin; Lysosomal-associated membrane protein 3 ; LAMP-3; Melanoma-associated antigen ME491; OMA81H; Ocular melanoma-associated antigen; Tetraspanin-30; Tspan-30; CD63.

Product Information

Observed MW 26,35-65 kDa

Buffer PBS containing 50% glycerol, 0.5% BSA and 0.02% sodium azide

Dilution WB:1/500-1/2000;IHC-p:1:100-1:300;IF:1:50-200; ELISA:1/20000.

Other applications have not been tested. Optimal dilutions/concentrations should be determined by the end user.

Background

The protein encoded by this gene is a member of the transmembrane 4 superfamily, also known as the tetraspanin family. Most of these members are cell-surface proteins that are characterized by the presence of four hydrophobic domains. The proteins mediate signal transduction events that play a role in the regulation of cell development, activation, growth and motility. The encoded protein is a cell surface glycoprotein that is known to complex with integrins. It may function as a blood platelet activation marker. Deficiency of this protein is associated with Hermansky-Pudlak syndrome. Also this gene has been associated with tumor progression. Alternative splicing results in multiple transcript variants encoding different protein isoforms.

Research Use

For research use only, not for use in diagnostic procedure.

Legend

Applications: WB-Western Blot; IHC-Immunohistochemistry; IF-Immunofluorescence; IP-Immunoprecipitation; FC-Flow cytometry; ChIP-Chromatin Immunoprecipitation

Reactivity: H-Human; R-Rat; M-Mouse; Mk-Monkey; Dg-Dog; Ch-Chicken; Hm-Hamster; Rb-Rabbit; Sh- Sheep; Pg-Pig; Z-Zebrafish; X-Xenopus; C-Cow.

Please contact Origin Diagnostics and Research for further assistance

www.originlab.in

info@originlab.in

+91-7736237778