

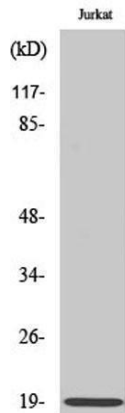
# Op18 Rabbit Polyclonal Antibody

OPR3079

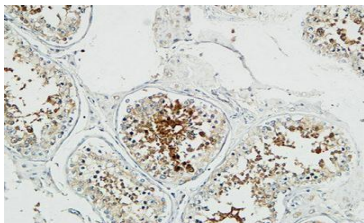
<b>Reactivity</b>	H,M,R	<b>Storage</b>	-20°C, Avoid freeze / thaw cycles
<b>Host</b>	Rabbit	<b>Applications</b>	WB; IHC; IF; ELISA
<b>Isotype</b>	IgG	<b>Concentration</b>	1 mg/mL

**Note:** Centrifuge before opening to ensure complete recovery of vial contents.

## Images



Western Blot analysis of Jurkat cells using Op18 Polyclonal Antibody diluted at 1:500



Immunohistochemical analysis of paraffin-embedded Human testis. 1, Antibody was diluted at 1:100 (4°C overnight). 2, High-pressure and temperature EDTA, pH8.0 was used for antigen retrieval. 3, Secondary antibody was diluted at 1:200 (room temperature, 30minutes).

## Immunogen Information

<b>Immunogen</b>	The antiserum was produced against synthesized peptide derived from human Stathmin 1. AA range:9-58
<b>Swissprot</b>	P16949
<b>Synonyms</b>	STMN1; C1orf215; LAP18; OP18; Stathmin; Leukemia-associated phosphoprotein p18; Metablastin; Oncoprotein 18; Op18; Phosphoprotein p19; pp19; Prosolin; Protein Pr22; pp17.

## Product Information

<b>Observed MW</b>	19kD
<b>Buffer</b>	PBS containing 50% glycerol, 0.5% BSA and 0.02% sodium azide.
<b>Dilution</b>	WB: 1/500 – 1/2000, IHC: 1/100 – 1/300; IF: 1/200 – 1/1000, ELISA: 1/10000

Other applications have not been tested. Optimal dilutions/concentrations should be determined by the end user

## Background

This gene belongs to the stathmin family of genes. It encodes a ubiquitous cytosolic phosphoprotein proposed to function as an intracellular relay integrating regulatory signals of the cellular environment. The encoded protein is involved in the regulation of the microtubule filament system by destabilizing microtubules. It prevents assembly and promotes disassembly of microtubules. Multiple transcript variants encoding different isoforms have been found for this gene.

## Research Use

For research use only, not for use in diagnostic procedure

## Legend

**Applications:** WB-Western Blot; IHC-Immunohistochemistry; IF-Immunofluorescence; IP-Immunoprecipitation; FC-Flow cytometry; ChIP-Chromatin Immunoprecipitation, ICC-Immunocytochemistry

**Reactivity:** H-Human; R-Rat; M-Mouse; Mk-Monkey; Dg-Dog; Ch-Chicken; Hm-Hamster; Rb-Rabbit; Sh- Sheep; Pg-Pig; Z-Zebrafish; X-Xenopus; C-Cow,Bv- Bovine.

Please contact Origin Diagnostics and Research for further assistance

[www.originlab.in](http://www.originlab.in)

[info@originlab.in](mailto:info@originlab.in)

+91-7736237778