

Cryopyrin Rabbit Polyclonal Antibody

OPR4112

Reactivity H,M,R

Host Rabbit

Isotype IgG

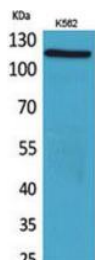
Storage -20°C, Avoid freeze/ thaw cycles

Applications WB;IHC;IF;ELISA

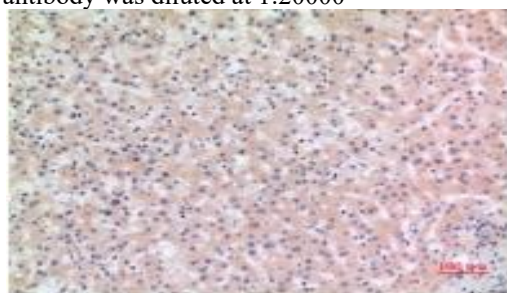
Concentration 1 mg/mL

Note: Centrifuge before opening to ensure complete recovery of vial contents.

Images



Western Blot analysis of K562 cells using Cryopyrin Polyclonal Antibody. Secondary antibody was diluted at 1:20000



Immunohistochemical analysis of paraffin-embedded human-liver, antibody was diluted at 1:100

Immunogen Information

Immunogen The antiserum was produced against synthesized peptide derived from the Internal region of human NLRP3. AA range:511-560

Swissprot Q96P20

Synonyms NLRP3; C1orf7; CIAS1; NALP3; PYPAF1; NACHT, LRR and PYD domains-containing protein 3; Angiotensin/vasopressin receptor AII/AVP-like; Caterpillar protein 1.1CLR1.1; Cold autoinflammatory syndrome 1 protein; Cryopyrin; PYRIN-containing APAF1-like protein 1

Product Information

Observed MW 115 kDa

Buffer PBS containing 50% glycerol, 0.5% BSA and 0.02% sodium azide

Dilution WB:1:500-1/2000;IHC-p:1/100-1/300;ELISA:1/20000

Other applications have not been tested. Optimal dilutions/concentrations should be determined by the end user.

Background

This gene encodes a pyrin-like protein containing a pyrin domain, a nucleotide-binding site (NBS) domain, and a leucine-rich repeat (LRR) motif. This protein interacts with the apoptosis-associated speck-like protein PYCARD/ASC, which contains a caspase recruitment domain, and is a member of the NALP3 inflammasome complex. This complex functions as an upstream activator of NF-kappaB signaling, and it plays a role in the regulation of inflammation, the immune response, and apoptosis. Mutations in this gene are associated with familial cold autoinflammatory syndrome (FCAS), Muckle-Wells syndrome (MWS), chronic infantile neurological cutaneous and articular (CINCA) syndrome, and neonatal-onset multisystem inflammatory disease (NOMID). Multiple alternatively spliced transcript variants encoding distinct isoforms have been identified for this gene.

Research Use

For research use only, not for use in diagnostic procedure.

Legend

Applications: WB-Western Blot; IHC-Immunohistochemistry; IF-Immunofluorescence; IP-Immunoprecipitation; FC-Flow cytometry;ChIP-Chromatin Immunoprecipitation

Reactivity: H-Human; R-Rat; M-Mouse; Mk-Monkey; Dg-Dog; Ch-Chicken; Hm-Hamster; Rb-Rabbit; Sh- Sheep; Pg-Pig; Z-Zebrafish;X-Xenopus; C-Cow.

Please contact Origin Diagnostics and Research for further assistance

www.originlab.in

info@originlab.in

+91-7736237778