

# PR Rabbit Polyclonal Antibody

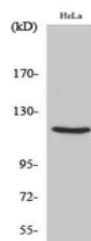
OPR3255

**Reactivity** H,M,R  
**Host** Rabbit  
**Isotype** IgG

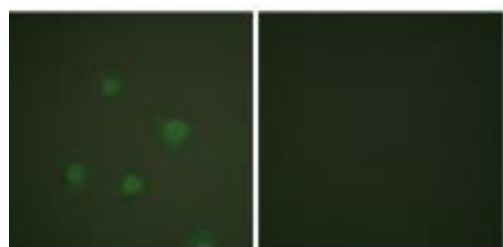
**Storage** -20 °C, Avoid freeze/ thaw cycles  
**Applications** WB;IHC;IF;ELISA  
**Concentration** 1 mg/mL

Note: Centrifuge before opening to ensure complete recovery of vial contents.

## Images



Western Blot analysis of various cells using PR Polyclonal Antibody.



Immunofluorescence analysis of A549 cells, using Progesterone Receptor Antibody. The picture on the right is blocked with the synthesized peptide.

## Immunogen Information

**Immunogen** The antiserum was produced against synthesized peptide derived from human Progesterone Receptor. AA range:371-420

**Swissprot** P06401

**Synonyms** PGR; NR3C3; Progesterone receptor; PR; Nuclear receptor subfamily 3 group C member 3

## Product Information

**Observed MW** 99 kDa

**Buffer** PBS containing 50% glycerol, 0.5% BSA and 0.02% sodium azide

**Dilution** WB: 1/500 - 1/2000; IHC : 1/100 - 1/300 ; IF:1/200-1/ 1000;ELISA: 1/5000

Other applications have not been tested. Optimal dilutions/concentrations should be determined by the end user.

## Background

This gene encodes a member of the steroid receptor superfamily. The encoded protein mediates the physiological effects of progesterone, which plays a central role in reproductive events associated with the establishment and maintenance of pregnancy. This gene uses two distinct promoters and translation start sites in the first exon to produce several transcript variants, both protein coding and non-protein coding. Two of the isoforms (A and B) are identical except for an additional 165 amino acids found in the N-terminus of isoform B and mediate their own response genes and physiologic effects with little overlap.

## Research Use

For research use only, not for use in diagnostic procedure.

## Legend

Applications: WB-Western Blot; IHC-Immunohistochemistry; IF-Immunofluorescence; IP-Immunoprecipitation; FC-Flow cytometry;ChIP-Chromatin Immunoprecipitation

Reactivity: H-Human; R-Rat; M-Mouse; Mk-Monkey; Dg-Dog; Ch-Chicken; Hm-Hamster; Rb-Rabbit; Sh- Sheep; Pg-Pig; Z-Zebrafish;X-Xenopus; C-Cow.

Please contact Origin Diagnostics and Research for further assistance

[www.originlab.in](http://www.originlab.in)

[info@originlab.in](mailto:info@originlab.in)

+91-7736237778