

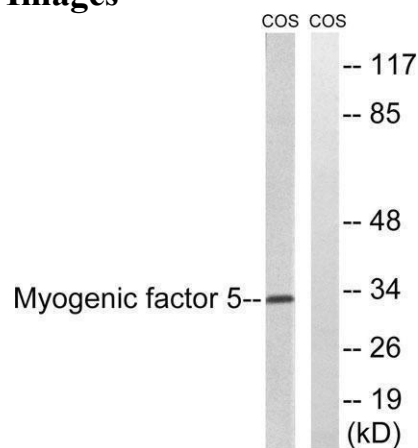
Myf-5 Rabbit Polyclonal Antibody

OPR6310

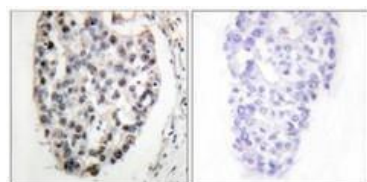
Reactivity	H, M, Mk	Storage	-20°C, Avoid freeze / thaw cycles
Host	Rabbit	Applications	WB; IHC; IF; ELISA
Isotype	IgG	Concentration	1 mg/mL

Note: Centrifuge before opening to ensure complete recovery of vial contents.

Images



Western blot analysis of lysates from COS7 cells, using MYF5 Antibody. The lane on the right is blocked with the synthesized peptide.



Immunohistochemistry analysis of paraffin-embedded human breast carcinoma tissue, using MYF5 Antibody. The picture on the right is blocked with the synthesized peptide.

Immunogen Information

Immunogen	The antiserum was produced against synthesized peptide derived from human MYF5. AA range:21- 70
Swissprot	P13349
Synonyms	MYF5; BHLHC2; Myogenic factor 5; Myf-5; Class C basic helix-loop-helix protein 2; bHLHc2

Product Information

Observed MW	28kD
Buffer	PBS containing 50% glycerol, 0.5% BSA and 0.02% sodium azide.
Dilution	WB: 1/500 - 1/2000, IHC: 1/100 - 1/300, ELISA: 1/20000, IF: 1/200 -1/1000

Other applications have not been tested. Optimal dilutions/concentrations should be determined by the end user

Background

Function: Involved in muscle differentiation (myogenic factor). Induces fibroblasts to differentiate into myoblasts. Probable sequence specific DNA-binding protein, similarity: Contains 1 basic helix-loop-helix (bHLH) domain, subunit: Efficient DNA binding requires dimerization with another bHLH protein.

Research Use

For research use only, not for use in diagnostic procedure

Legend

Applications: WB-Western Blot; IHC-Immunohistochemistry; IF-Immunofluorescence; IP-Immunoprecipitation; FC-Flow cytometry; ChIP-Chromatin Immunoprecipitation

Reactivity: H-Human; R-Rat; M-Mouse; Mk-Monkey; Dg-Dog; Ch-Chicken; Hm-Hamster; Rb-Rabbit; Sh- Sheep; Pg-Pig; Z- Zebrafish; X-Xenopus; C-Cow,Fs- fish.

Please contact Origin Diagnostics and Research for further assistance

www.originlab.in

info@originlab.in

+91-7736237778