

Bax (6F11) Mouse Monoclonal Antibody

OPM1268

Reactivity H,M,R

Host Mouse

Isotype IgG1

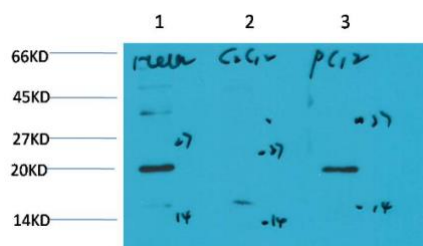
Storage -20 °C, Avoid freeze/ thaw cycles

Applications WB;IHC

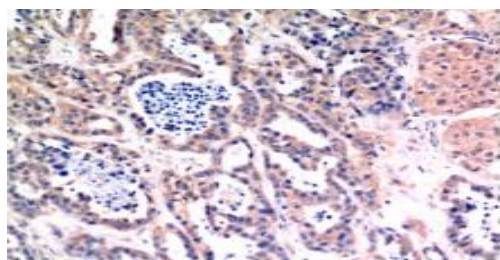
Concentration 1 mg/mL

Note: Centrifuge before opening to ensure complete recovery of vial contents.

Images



Western blot analysis of) HeLa Cell Lysate
2) C2C12 Cell Lysate 3) PC12 Cell Lysate using
Bax Mouse mAb diluted at: 1000



Immunohistochemical analysis of paraffin-
embedded Human Breast Carcinoma Tissue
using Bax Mouse mAb diluted at: 200.

Immunogen Information

Immunogen Synthetic Peptide

Swissprot Q07812

Synonyms Apoptosis regulator bax BAXA BCL2 associated X protein

Product Information

Observed MW 20 kDa

Buffer PBS with 0.02% sodium azide and 50% glycerol
pH 7.4

Dilution WB:1/1000-2000;IHC:1/100-200

Other applications have not been tested. Optimal dilutions/concentrations should be determined by the end user.

Background

Bax is a key component for cellular induced apoptosis through mitochondrial stress. Upon apoptotic stimulation Bax forms oligomers and translocates from the cytosol to the mitochondrial membrane.

Research Use

For research use only, not for use in diagnostic procedure.

Legend

Applications: WB-Western Blot; IHC-Immunohistochemistry; IF-Immunofluorescence; IP-Immunoprecipitation; FC-Flow cytometry;ChIP-Chromatin Immunoprecipitation

Reactivity: H-Human; R-Rat; M-Mouse; Mk-Monkey; Dg-Dog; Ch-Chicken; Hm-Hamster; Rb-Rabbit; Sh- Sheep; Pg-Pig; Z-Zebrafish; X-Xenopus; C-Cow.

Please contact Origin Diagnostics and Research for further assistance

www.originlab.in

info@originlab.in

+91-7736237778