

α -Smooth Muscle Actin Mouse Monoclonal Antibody

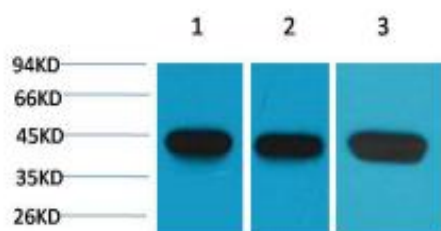
OPM1177

Reactivity H, M, R
Host Mouse
Isotype IgG1

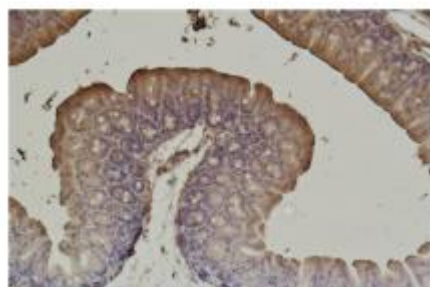
Storage -20°C, Avoid freeze / thaw cycles
Applications WB, IHC
Concentration 1 mg/mL

Note: Centrifuge before opening to ensure complete recovery of vial contents.

Images



Western blot analysis of 1) HeLa 2)3T3 3)Rat Brain with α -smooth Muscle Actin Mouse mAb diluted at:1000000.



Immunohistochemical analysis of paraffin-embedded Mouse Cecal Tissue using α -Smooth Muscle Actin Mouse mAb diluted at :500.

Immunogen Information

Immunogen Synthetic Peptide
Swissprot P62736
Synonyms AAT6 antibody, ACTA2 antibody, alpha actin 2 antibody, GIG46 antibody, ACTSA antibody, ACTVS antibody.

Product Information

Observed MW 42 kDa
Buffer PBS with 0.02% sodium azide and 50% glycerol pH 7.4
Dilution WB:1/10000-100000,IHC:1/1000-2000.

Other applications have not been tested. Optimal dilutions/concentrations should be determined by the end user

Background

Actin is a globular multi-functional protein that forms microfilaments. ACTA2 codes for an α -actin located in the smooth muscle, and also in vascular smooth muscle.

Research Use

For research use only, not for use in diagnostic procedure

Legend

Applications: WB-Western Blot; IHC-Immunohistochemistry; IF-Immunofluorescence; IP-Immunoprecipitation; FC-Flow cytometry; ChIP-Chromatin Immunoprecipitation

Reactivity: H-Human; R-Rat; M-Mouse; Mk-Monkey; Dg-Dog; Ch-Chicken; Hm-Hamster; Rb-Rabbit; Sh- Sheep; Pg-Pig; Z-Zebrafish; X-Xenopus; C-Cow.

Please contact Origin Diagnostics and Research for further assistance

www.originlab.in

info@originlab.in

+91-7736237778