

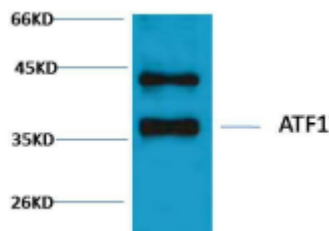
CREB Rabbit Polyclonal Antibody

OPR039

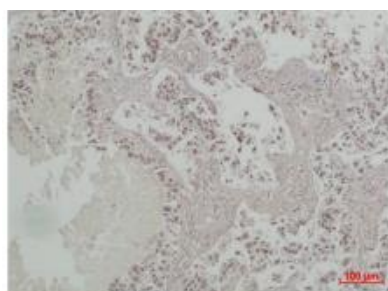
Reactivity	H	Storage	-20°C, Avoid freeze / thaw cycles
Host	Rabbit	Applications	WB;IHC
Isotype	IgG	Concentration	1 mg/mL

Note: Centrifuge before opening to ensure complete recovery of vial contents.

Images



Western blot analysis of HeLa with Rabbit pAb diluted at 1:2,000.



Immunohistochemical analysis of paraffin-embedded human Lung carcinoma using CREB Rabbit pAb diluted at 1:500.

Immunogen Information

Immunogen	Recombinant Protein
Swissprot	P16220
Synonyms	Cyclic AMP-responsive element binding protein 1 antibody, MGC9284 antibody, CREB1 antibody

Product Information

Observed MW	37,43 kDa
Buffer	PBS with 0.02% sodium azide and 50% glycerol pH 7.4.
Dilution	WB:1/1000-2000, IHC:1/200-500

Other applications have not been tested. Optimal dilutions/concentrations should be determined by the end user

Background

CREB (cAMP response element-binding protein) is a cellular transcription factor. This protein binds the cAMP response element (CRE), a sequence present in many viral and cellular promoters. CREB is closely related in structure and function to CREM (cAMP response element modulator) and ATF-1 (activating transcription factor-1) proteins. CREB proteins are expressed in many animals.

Research Use

For research use only, not for use in diagnostic procedure.

Legend

Applications: WB-Western Blot; IHC-Immunohistochemistry; IF-Immunofluorescence; IP-Immunoprecipitation; FC-Flow cytometry; ChIP-Chromatin Immunoprecipitation

Reactivity: H-Human; R-Rat; M-Mouse; Mk-Monkey; Dg-Dog; Ch-Chicken; Hm-Hamster; Rb-Rabbit; Sh- Sheep; Pg-Pig; Z-Zebrafish; X-Xenopus; C-Cow.

Please contact Origin Diagnostics and Research for further assistance

www.originlab.in

info@originlab.in

+91-7736237778