

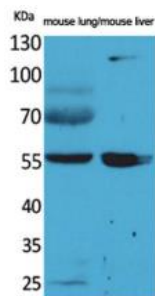
ALDH1A1 Rabbit Polyclonal Antibody

OPR3887

Reactivity	H,M,R	Storage	-20°C, Avoid freeze/ thaw cycles
Host	Rabbit	Applications	WB; IHC;IF; ELISA
Isotype	IgG	Concentration	1 mg/mL

Note: Centrifuge before opening to ensure complete recovery of vial contents.

Images



Western Blot analysis of mouse lung, mouse liver cells using ALDH1A1 Polyclonal Antibody. Secondary antibody was diluted at 1:20000



Immunohistochemical analysis of paraffin-embedded human-liver, antibody was diluted at 1:100

Immunogen Information

Immunogen The antiserum was produced against synthesized peptide derived from the N-terminal region of human ALDH1A1. AA range:21-70

Swissprot P00352

Synonyms ALDH1A1; ALDC; ALDH1; PUMB1; Retinal dehydrogenase 1; RALDH 1; RaLDH1; ALDH-E1; ALHDII; Aldehyde dehydrogenase family 1 member A1; Aldehyde dehydrogenase, cytosolic

Product Information

Observed MW 55 kDa

Buffer PBS containing 50% glycerol, 0.5% BSA and 0.02% sodium azide.

Dilution WB:1/500;1/2000;IHC-p:1/100;1/300;ELISA:1/20000

Other applications have not been tested. Optimal dilutions/concentrations should be determined by the end user.

Background

The protein encoded by this gene belongs to the aldehyde dehydrogenase family. Aldehyde dehydrogenase is the next enzyme after alcohol dehydrogenase in the major pathway of alcohol metabolism. There are two major aldehyde dehydrogenase isozymes in the liver, cytosolic and mitochondrial, which are encoded by distinct genes, and can be distinguished by their electrophoretic mobility, kinetic properties, and subcellular localization. This gene encodes the cytosolic isozyme. Studies in mice show that through its role in retinol metabolism, this gene may also be involved in the regulation of the metabolic responses to high-fat diet.

Research Use

For research use only, not for use in diagnostic procedure.

Legend

Applications: WB-Western Blot; IHC-Immunohistochemistry; IF-Immunofluorescence; IP-Immunoprecipitation; FC-Flow cytometry; ChIP-Chromatin Immunoprecipitation

Reactivity: H-Human; R-Rat; M-Mouse; Mk-Monkey; Dg-Dog; Ch-Chicken; Hm-Hamster; Rb-Rabbit; Sh- Sheep; Pg-Pig; Z-Zebrafish; X-Xenopus; C-Cow.

Please contact Origin Diagnostics and Research for further assistance

www.originlab.in

info@originlab.in

+91-7736237778