

Cdk6 Rabbit Polyclonal Antibody

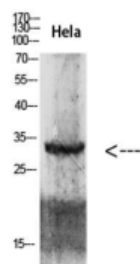
OPR8658

Reactivity H,M,R
Host Rabbit
Isotype IgG

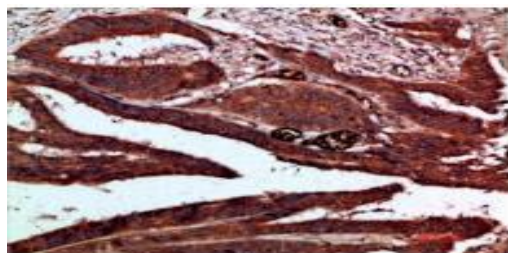
Storage -20°C, Avoid freeze/ thaw cycles
Applications WB;IHC;IF;ELISA
Concentration 1 mg/mL

Note: Centrifuge before opening to ensure complete recovery of vial contents.

Images



Western blot analysis of 293T HeLa lysate, antibody was diluted at 2000. Secondary antibody was diluted at 1:20000.



Immunohistochemical analysis of paraffin-embedded human colon cancer, antibody was diluted at 1:200.

Immunogen Information

Immunogen Synthetic peptide from human protein
AA range: 280-325
Swissprot Q00534
Synonyms Cyclin-dependent kinase 6 (EC 2.7.11.22; Cell division protein kinase 6; Serine/threonine-protein kinase PLSTIRE) .

Product Information

Observed MW 34 kDa
Buffer PBS containing 50% glycerol, 0.5% BSA and 0.02% sodium azide
Dilution WB:1:500-2000, IHC-p :1:500-200, ELISA: 1:10000-20000.

Other applications have not been tested. Optimal dilutions/concentrations should be determined by the end user.

Background

The protein encoded by this gene is a member of the cyclin-dependent protein kinase (CDK) family. CDK family members are highly similar to the gene products of *Saccharomyces cerevisiae* cdc28, and *Schizosaccharomyces pombe* cdc2, and are known to be important regulators of cell cycle progression. This kinase is a catalytic subunit of the protein kinase complex that is important for cell cycle G1 phase progression and G1/S transition. The activity of this kinase first appears in mid-G1 phase, which is controlled by the regulatory subunits including D-type cyclins and members of INK4 family of CDK inhibitors. This kinase, as well as CDK4, has been shown to phosphorylate, and thus regulate the activity of, tumor suppressor protein Rb. Expression of this gene is up-regulated in some types of cancer. Multiple alternatively spliced variants, encoding the same protein, have been identified.

Research Use

For research use only, not for use in diagnostic procedure.

Legend

Applications: WB-Western Blot; IHC-Immunohistochemistry; IF-Immunofluorescence; IP-Immunoprecipitation; FC-Flow cytometry; ChIP-Chromatin Immunoprecipitation

Reactivity: H-Human; R-Rat; M-Mouse; Mk-Monkey; Dg-Dog; Ch-Chicken; Hm-Hamster; Rb-Rabbit; Sh- Sheep; Pg-Pig; Z-Zebrafish; X-Xenopus; C-Cow.

Please contact Origin Diagnostics and Research for further assistance

www.originlab.in

info@originlab.in

+91-7736237778