

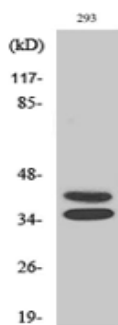
Pax-2 Rabbit Polyclonal Antibody

OPR3152

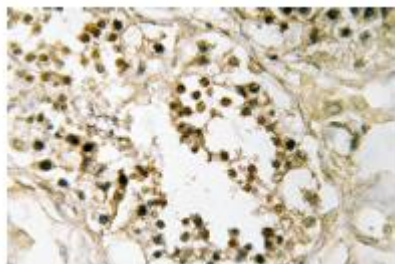
Reactivity	H,M	Storage	-20°C,Avoid freeze/ thaw cycles
Host	Rabbit	Applications	WB;IHC;IF;ELISA
Isotype	IgG	Concentration	1 mg/mL

Note: Centrifuge before opening to ensure complete recovery of vial contents.

Images



Western Blot analysis of various cells using Pax-2 Polyclonal Antibody.



Immunohistochemistry analysis of Pax-2 antibody in paraffin-embedded human testis tissue.

Immunogen Information

Immunogen	The antiserum was produced against synthesized peptide derived from human Pax-2.AA range:144-193
Swissprot	Q02962
Synonyms	PAX2;Paired box protein Pax-2

Product Information

Observed MW	42,35 kDa
Buffer	PBS containing 50% glycerol, 0.5% BSA and 0.02% sodium azide.
Dilution	WB:1/500-1/2000,IHC:1/100-1/300, ELISA: 1/5000.

Other applications have not been tested. Optimal dilutions/concentrations should be determined by the end user.

Background

PAX2 encodes paired box gene 2,one of many human homologues of the Drosophila melanogaster gene prd.The central feature of this transcription factor gene family is the conserved DNA-binding paired box domain.PAX2 is believed to be a target of transcriptional suppression by the tumor suppressor gene WT1. Mutations within PAX2 have been shown to result in optic nerve colobomas and renal hypoplasia. Alternative splicing of this gene results in multiple transcript variants.

Research Use

For research use only, not for use in diagnostic procedure.

Legend

Applications: WB-Western Blot; IHC-Immunohistochemistry; IF-Immunofluorescence; IP-Immunoprecipitation; FC-Flow cytometry;ChIP-Chromatin Immunoprecipitation

Reactivity: H-Human; R-Rat; M-Mouse; Mk-Monkey; Dg-Dog; Ch-Chicken; Hm-Hamster; Rb-Rabbit; Sh- Sheep; Pg-Pig; Z-Zebrafish;X-Xenopus; C-Cow.

Please contact Origin Diagnostics and Research for further assistance

www.originlab.in

info@originlab.in

+91-7736237778