

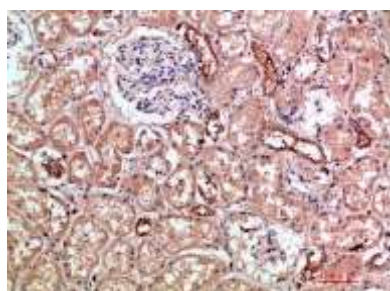
CD11b Rabbit Polyclonal Antibody

OPR8673

Reactivity	H, R, M	Storage	-20°C, Avoid freeze/ thaw cycles
Host	Rabbit	Applications	IHC, ELISA
Isotype	IgG	Concentration	1 mg/mL

Note: Centrifuge before opening to ensure complete recovery of vial contents.

Images



Immunohistochemical analysis of paraffin-embedded human – kidney, antibody was diluted at 1:200

Immunogen Information

Immunogen	Synthetic peptide from human protein at AA range: 280-360
Swissprot	P11215
Synonyms	Integrin alpha-M (CD11 antigen-like family member B; CR-3 alpha chain; Cell surface glycoprotein MAC-1 subunit alpha; Leukocyte adhesion receptor MO1; Neutrophil adherence receptor; CD antigen CD11b)

Product Information

Buffer	PBS containing 50% glycerol and 0.02% sodium azide.
Dilution	IHC-p:- 1:50 -200, ELISA:- 1:10000 - 20000

Other applications have not been tested. Optimal dilutions/concentrations should be determined by the end user.

Background

Integrin subunit alpha M (ITGAM) Homo sapiens. This gene encodes the integrin alpha M chain. Integrins are heterodimeric integral membrane proteins composed of an alpha chain and a beta chain. This I-domain containing alpha integrin combines with the beta 2 chain (ITGB2) to form a leukocyte-specific integrin referred to as macrophage receptor 1 ('Mac-1'), or inactivated-C3b (iC3b) receptor 3 ('CR3'). The alpha M beta 2 integrin is important in the adherence of neutrophils and monocytes to stimulated endothelium, and also in the phagocytosis of complement coated particles. Multiple transcript variants encoding different isoforms have been found for this gene.

Research Use

For research use only, not for use in diagnostic procedure.

Legend

Applications: WB-Western Blot; IHC-Immunohistochemistry; IF-Immunofluorescence; IP-Immunoprecipitation; FC-Flow cytometry; ChIP-Chromatin Immunoprecipitation

Reactivity: H-Human; R-Rat; M-Mouse; Mk-Monkey; Dg-Dog; Ch-Chicken; Hm-Hamster; Rb-Rabbit; Sh- Sheep; Pg-Pig; Z- Zebrafish; X-Xenopus; C-Cow,Fs- fish.

Please contact Origin Diagnostics and Research for further assistance

www.originlab.in

info@originlab.in

+91-7736237778