

# MRP2 Rabbit Polyclonal Antibody

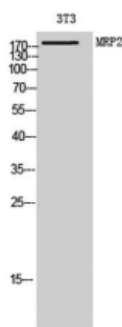
OPR4715

**Reactivity** H,R,M  
**Host** Rabbit  
**Isotype** IgG

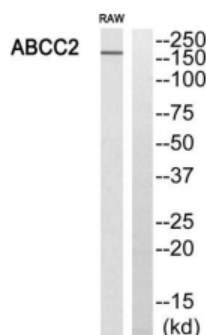
**Storage** -20°C, Avoid freeze / thaw cycles  
**Applications** WB;ELISA  
**Concentration** 1 mg/mL

Note: Centrifuge before opening to ensure complete recovery of vial contents.

## Images



Western Blot analysis of 3T3 cells using MRP2 Polyclonal Antibody diluted at 1:1000.



Western blot analysis of ABCC2 Antibody. The lane on the right is blocked with the ABCC2 peptide.

## Immunogen Information

**Immunogen** The antiserum was produced against synthesized peptide derived from human ABCC2. AA range:991-1040  
**Swissprot** Q92887  
**Synonyms** ABCC2; CMOAT; CMOAT1; CMRP; MRP2; Canalicular multispecific organic anion transporter 1; ATP-binding cassette sub-family C member 2; Canalicular multidrug resistance protein; Multidrug resistance-associated protein 2

## Product Information

**Observed MW** 175 kDa  
**Buffer** PBS containing 50% glycerol, 0.5% BSA and 0.02% sodium azide.  
**Dilution** WB: 1/500 - 1/2000, ELISA: 1/10000

Other applications have not been tested. Optimal dilutions/concentrations should be determined by the end user

## Background

The protein encoded by this gene is a member of the superfamily of ATP-binding cassette (ABC) transporters. ABC proteins transport various molecules across extra- and intra-cellular membranes. ABC genes are divided into seven distinct subfamilies (ABC1, MDR/TAP, MRP, ALD, OABP, GCN20, White). This protein is a member of the MRP subfamily which is involved in multi-drug resistance. This protein is expressed in the canalicular (apical) part of the hepatocyte and functions in biliary transport. Substrates include anticancer drugs such as vinblastine; therefore, this protein appears to contribute to drug resistance in mammalian cells. Several different mutations in this gene have been observed in patients with Dubin-Johnson syndrome (DJS), an autosomal recessive disorder characterized by conjugated hyperbilirubinemia.

## Research Use

For research use only, not for use in diagnostic procedure.

## Legend

Applications: WB-Western Blot; IHC-Immunohistochemistry; IF-Immunofluorescence; IP-Immunoprecipitation; FC-Flow cytometry; ChIP-Chromatin Immunoprecipitation

Reactivity: H-Human; R-Rat; M-Mouse; Mk-Monkey; Dg-Dog; Ch-Chicken; Hm-Hamster; Rb-Rabbit; Sh- Sheep; Pg-Pig; Z-Zebrafish; X-Xenopus; C-Cow.

Please contact Origin Diagnostics and Research for further assistance

[www.originlab.in](http://www.originlab.in)

[info@originlab.in](mailto:info@originlab.in)

+91-7736237778