

Bcl-2 Mouse Monoclonal Antibody

OPM1041

Reactivity H,M,R

Host Mouse

Isotype IgG1

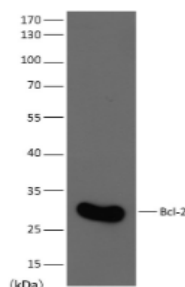
Storage -20 °C, Avoid freeze/ thaw cycles

Applications WB;IHC;IF

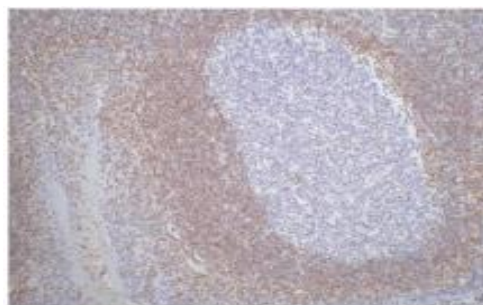
Concentration 1 mg/mL

Note: Centrifuge before opening to ensure complete recovery of vial contents.

Images



Western blot analysis of extracts from HeLa using Bcl-2 diluted at 1:1000



IHC staining of Human tonsil tissue paraffin-embedded with Bcl-2 mouse mAb (6B5) diluted at: 200

Immunogen Information

Immunogen Synthetic Peptide

Swissprot P10415

Synonyms B-Cell Leukemia/Lymphoma 2 ;B-Cell CLL/Lymphoma 2

Product Information

Observed MW 26 kDa

Buffer PBS with 0.02% sodium azide and 50% glycerol pH 7.4

Dilution WB: 1/1000-2000;IHC:1/200,IF:1/100-200

Other applications have not been tested. Optimal dilutions/concentrations should be determined by the end user.

Background

BCL2 is an integral outer mitochondrial membrane protein that blocks the apoptotic death of some cells such as lymphocytes. Constitutive expression of BCL2 such as in the case of translocation of BCL2 to Ig heavy chain locus is thought to be the cause of follicular lymphoma. BCL2 suppresses apoptosis in a variety of cell systems including factor-dependent Lymphohematopoietic and neural cells. It regulates cell death by controlling the mitochondrial membrane permeability.

Research Use

For research use only, not for use in diagnostic procedure.

Legend

Applications: WB-Western Blot; IHC-Immunohistochemistry; IF-Immunofluorescence; IP-Immunoprecipitation; FC-Flow cytometry;ChIP-Chromatin Immunoprecipitation

Reactivity: H-Human; R-Rat; M-Mouse; Mk-Monkey; Dg-Dog; Ch-Chicken; Hm-Hamster; Rb-Rabbit; Sh- Sheep; Pg-Pig; Z-Zebrafish; X-Xenopus; C-Cow.

Please contact Origin Diagnostics and Research for further assistance

www.originlab.in

info@originlab.in

+91-7736237778