

# IL-2 Rabbit Polyclonal Antibody

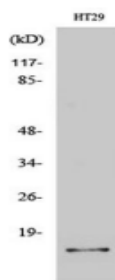
OPR2611

**Reactivity** H,M,R  
**Host** Rabbit  
**Isotype** IgG

**Storage** -20°C, Avoid freeze / thaw cycles  
**Applications** WB;ELISA,IHC,IF  
**Concentration** 1 mg/mL

Note: Centrifuge before opening to ensure complete recovery of vial contents.

## Images



Western Blot analysis of various cells using IL-2 Polyclonal Antibody



Immunohistochemical analysis of paraffin-embedded Human kidney. 1, Antibody was diluted at 1:100(4° overnight). 2, High-pressure and temperature EDTA, pH 8.0 was used for antigen retrieval. 3, Secondary antibody was diluted at 1:200(room temperature, 30 min)

## Immunogen Information

**Immunogen** The antiserum was produced against synthesized peptide derived from human IL-2.  
AA range:16-65  
**Swissprot** P60568  
**Synonyms** IL2; Interleukin-2; IL-2; T-cell growth factor; TCGF; Aldesleukin

## Product Information

**Observed MW** 15 kDa  
**Buffer** PBS containing 50% glycerol, 0.5% BSA and 0.02% sodium azide.  
**Dilution** WB: 1/500 - 1/2000, IHC-p: 1:100-300 , ELISA: 1/20000, IF 1:100-300

Other applications have not been tested. Optimal dilutions/concentrations should be determined by the end user

## Background

The protein encoded by this gene is a secreted cytokine that is important for the proliferation of T and B lymphocytes. The receptor of this cytokine is a heterotrimeric protein complex whose gamma chain is also shared by interleukin 4 (IL4) and interleukin7(IL7). The expression of this gene in mature thymocytes is monoallelic, which represents an unusual regulatory mode for controlling the precise expression of a single gene. The targeted disruption of a similar gene in mice leads to ulcerative colitis-like disease, which suggests an essential role of this gene in the immune response to antigenic stimuli.

## Research Use

For research use only, not for use in diagnostic procedure.

## Legend

Applications: WB-Western Blot; IHC-Immunohistochemistry; IF-Immunofluorescence; IP-Immunoprecipitation; FC-Flow cytometry; ChIP-Chromatin Immunoprecipitation

Reactivity: H-Human; R-Rat; M-Mouse; Mk-Monkey; Dg-Dog; Ch-Chicken; Hm-Hamster; Rb-Rabbit; Sh- Sheep; Pg-Pig; Z-Zebrafish; X-Xenopus; C-Cow.

Please contact Origin Diagnostics and Research for further assistance

[www.originlab.in](http://www.originlab.in)

[info@originlab.in](mailto:info@originlab.in)

+91-7736237778