

Cox-2 Rabbit Polyclonal Antibody

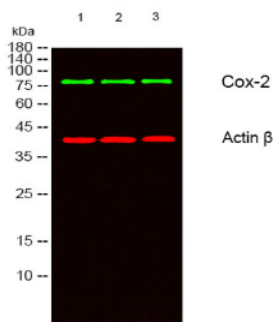
OPR2034

Reactivity H,M,R
Host Rabbit
Isotype IgG

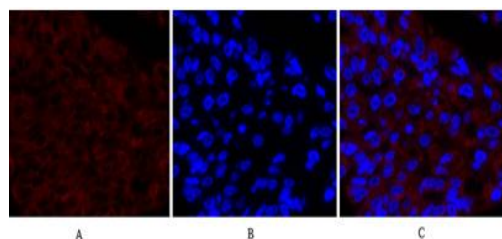
Storage -20 °C, Avoid freeze/ thaw cycles
Applications WB;IHC;IF;ELISA
Concentration 1 mg/mL

Note: Centrifuge before opening to ensure complete recovery of vial contents.

Images



Western blot analysis of lysates from 1)A549, 2)HELA, 3)MCF-7 cells, (Green) primary antibody was diluted at 1:1000, 4° over night, secondary antibody was diluted at 1:10000, 37° 1hour.(Red) Actin β Monoclonal Antibody (5B7)



Immunofluorescence analysis of human-liver-cancer tissue.1, Cox-2 Polyclonal Antibody (red) was diluted at 1:200(4°C, overnight). 2, Cy3 labeled Secondary antibody was diluted at 1:300(room temperature, 50min).3, Picture B: DAPI (blue) 10min. Picture A: Target. Picture B: DAPI. Picture C: merge of A+B.

Immunogen Information

Immunogen The antiserum was produced against synthesized peptide derived from human Cox2.

AA range:555-604

Swissprot P35354

Synonyms PTGS2; COX2; Prostaglandin G/H synthase 2;Cyclooxygenase-2;COX-2;PHS II;Prostaglandin H2 synthase 2; PGH synthase 2; PGHS-2; Prostaglandin-endoperoxide synthase 2.

Product Information

Observed MW 70 kDa

Buffer PBS containing 50% glycerol, 0.5% BSA and 0.02% sodium azide

Dilution WB:1/500-1/2000;IHC:1/100-1/300; IF:1/200-1/1000 ELISA: 1/2000.

Other applications have not been tested. Optimal dilutions/concentrations should be determined by the end user.

Background

Prostaglandin-endoperoxide synthase (PTGS), also known as cyclooxygenase, is the key enzyme in prostaglandin biosynthesis, and acts both as a dioxygenase and as a peroxidase. There are two isozymes of PTGS: a constitutive PTGS1 and an inducible PTGS2, which differ in their regulation of expression and tissue distribution. This gene encodes the inducible isozyme. It is regulated by specific stimulatory events, suggesting that it is responsible for the prostanoid biosynthesis involved in inflammation and mitogenesis.

Research Use

For research use only, not for use in diagnostic procedure.

Legend

Applications: WB-Western Blot; IHC-Immunohistochemistry; IF-Immunofluorescence; IP-Immunoprecipitation; FC-Flow cytometry;ChIP-Chromatin Immunoprecipitation

Reactivity: H-Human; R-Rat; M-Mouse; Mk-Monkey; Dg-Dog; Ch-Chicken; Hm-Hamster; Rb-Rabbit; Sh- Sheep; Pg-Pig; Z-Zebrafish;X-Xenopus; C-Cow.

Please contact Origin Diagnostics and Research for further assistance

www.originlab.in

info@originlab.in

+91-7736237778