

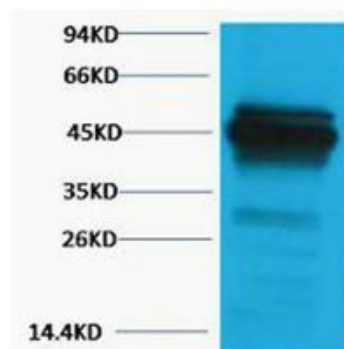
# CK18 Rabbit Polyclonal Antibody

OPR20786

<b>Reactivity</b>	H	<b>Storage</b>	-20°C, Avoid freeze / thaw cycles
<b>Host</b>	Rabbit	<b>Applications</b>	WB
<b>Isotype</b>	IgG	<b>Concentration</b>	1 mg/mL

Note: Centrifuge before opening to ensure complete recovery of vial contents.

## Images



Western blot analysis of Hela, Rabbit pAb diluted at 1:2000. Secondary antibody was diluted at 1:20000

## Immunogen Information

<b>Immunogen</b>	Recombinant Protein of Keratin type I cytoskeletal 18
<b>Swissprot</b>	P05783
<b>Synonyms</b>	KRT18; CYK18; PIG46; Keratin, type I cytoskeletal 18; Cell proliferation-inducing gene 46 protein; Cytokeratin-18; CK-18; Keratin-18; K18

## Product Information

<b>Observed MW</b>	46 kDa
<b>Buffer</b>	PBS containing 50% glycerol, 0.5% BSA and 0.02% sodium azide
<b>Dilution</b>	WB: 1:1000-2000

Other applications have not been tested. Optimal dilutions/concentrations should be determined by the end user

## Background

KRT18 encodes the type I intermediate filament chain keratin 18. Keratin 18, together with its filament partner keratin 8, are perhaps the most commonly found members of the intermediate filament gene family. They are expressed in single layer epithelial tissues of the body. Mutations in this gene have been linked to cryptogenic cirrhosis. Two transcript variants encoding the same protein have been found for this gene.

## Research Use

For research use only, not for use in diagnostic procedure

## Legend

Applications: WB-Western Blot; IHC-Immunohistochemistry; IF-Immunofluorescence; IP-Immunoprecipitation; FC-Flow cytometry; ChIP-Chromatin Immunoprecipitation

Reactivity: H-Human; R-Rat; M-Mouse; Mk-Monkey; Dg-Dog; Ch-Chicken; Hm-Hamster; Rb-Rabbit; Sh- Sheep; Pg-Pig; Z-Zebrafish; X-Xenopus; C-Cow.

Please contact Origin Diagnostics and Research for further assistance

[www.originlab.in](http://www.originlab.in)

[info@originlab.in](mailto:info@originlab.in)

+91-7736237778