

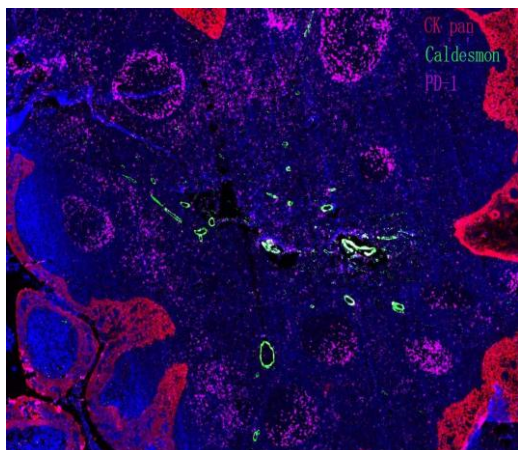
Cytokeratin Pan Mouse Monoclonal Antibody (ABT154)

OPM15529YP

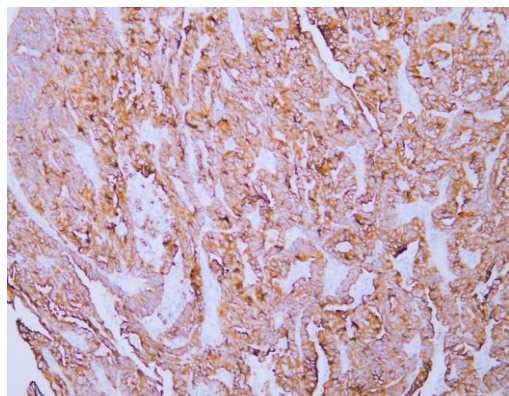
Reactivity	H,M,R	Storage	-20°C/1 year
Host	Mouse	Applications	IHC;IF;ELISA
Isotype	IgG	Concentration	1mg/mL

Note: Centrifuge before opening to ensure complete recovery of vial contents.

Images



Fluorescence multiplex immunohistochemical analysis of normal human appendix tissue (formalin-fixed paraffin-embedded section). The section was incubated in 3 rounds of staining; in the order of CK PAN (1/200 dilution), PD-1 (1/200 dilution), Caldesmon pan. (1/200 dilution), each using a separate fluorescent tyramide signal amplification system



Human endometrial adenocarcinoma tissue was stained with Anti-Cytokeratin (ABT154) Antibody

Legend

Applications: WB-Western Blot; IHC-Immunohistochemistry; IF-Immunofluorescence; IP-Immunoprecipitation; FC-Flow cytometry; ChIP-Chromatin Immunoprecipitation

Reactivity: H-Human; R-Rat; M-Mouse; Mk-Monkey; Dg-Dog; Ch-Chicken; Hm-Hamster; Rb-Rabbit; Sh- Sheep; Pg-Pig; Z-Zebrafish; X-Xenopus; C-Cow.

Target Information

Tissue Specificity Non-neural epithelial tissues.

Immunogen Synthesized peptide derived from human Cytokeratin Pan

Product Information

Buffer Liquid in PBS containing 50% glycerol, 0.5% BSA and 0.94% sodium azide.

Dilution IHC:- 1:200-400; ELISA:- 1:500-5000 IF:- 1:200-400
Note: For IHC, we suggest antigen retrieval with TE buffer pH 9.0

Other applications have not been tested. Optimal dilutions/concentrations should be determined by the end user.

Usage Suggestions

This product can be used in immunological reaction related experiments. For more information, please consult technical personnel.

Cell Pathway

Cell junction, adherens junction. Cell membrane; Single-pass type I membrane protein. Endosome. Golgi apparatus, trans-Golgi network. Colocalizes with DLGAP5 at sites of cell-cell contact in intestinal epithelial cells. Anchored to actin microfilaments through association with alpha-, beta- and gamma-catenin. Sequential proteolysis induced by apoptosis or calcium influx, results in translocation from sites of cell-cell contact to the cytoplasm. Colocalizes with RAB11A endosomes during its transport from the Golgi apparatus to the plasma membrane.

Research Use

For research use only, not for use in diagnostic procedure.

Please contact Origin Diagnostics and Research for further assistance

www.originlab.in

info@originlab.in

+91-7736237778