

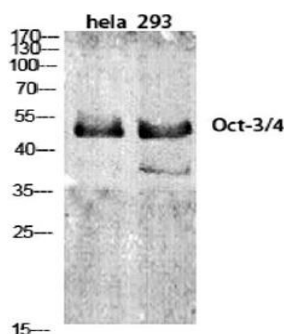
# Oct-3/4 Rabbit Polyclonal Antibody

OPR3003

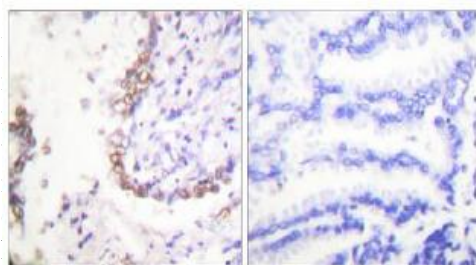
<b>Reactivity</b>	H,M,R	<b>Storage</b>	-20°C,Avoid freeze/ thaw cycles
<b>Host</b>	Rabbit	<b>Applications</b>	WB;IHC;IF;ELISA
<b>Isotype</b>	IgG	<b>Concentration</b>	1 mg/mL

Note: Centrifuge before opening to ensure complete recovery of vial contents.

## Images



Western Blot analysis of various cells using Oct-3/4 Polyclonal Antibody diluted at 1:1000.



1  
Immunohistochemistry analysis of paraffin-embedded human lung carcinoma tissue, using OCT3 Antibody. The picture on the right is blocked with the synthesized peptide.

## Immunogen Information

**Immunogen** The antiserum was produced against synthesized peptide derived from human OCT3.

AA range:191-240

**Swissprot** Q01860

**Synonyms** POU5F1;OCT3; OCT4; OTF3; POU domain; class 5,transcription factor 1; Octamer-binding protein 3;Oct-3; Octamer-binding protein 4; Oct 4;Octamer-binding transcription factor 3; OTF-3.

## Product Information

**Observed MW** 50 kDa

**Buffer** PBS containing 50% glycerol, 0.5% BSA and 0.02% sodium azide.

**Dilution** WB: 1/500 - 1/2000., IHC: 1/100 -1/300, ELISA: 1/10000.

Other applications have not been tested. Optimal dilutions/concentrations should be determined by the end user.

## Background

This gene encodes a transcription factor containing a POU homeodomain that plays a key role in embryonic development and stem cell pluripotency. Aberrant expression of this gene in adult tissues is associated with tumorigenesis. This gene can participate in a translocation with the Ewing's sarcoma gene on chromosome 21, which also leads to tumor formation. Alternative splicing, as well as usage of alternative AUG and non-AUG translation initiation codons, results in multiple isoforms. One of the AUG start codons is polymorphic in human populations. Related pseudogenes have been identified on chromosomes 1, 3, 8, 10 and 12.

## Research Use

For research use only,not for use in diagnostic procedure.

## Legend

Applications: WB-Western Blot; IHC-Immunohistochemistry; IF-Immunofluorescence; IP-Immunoprecipitation; FC-Flow cytometry;ChIP-Chromatin Immunoprecipitation

Reactivity: H-Human; R-Rat; M-Mouse; Mk-Monkey; Dg-Dog; Ch-Chicken; Hm-Hamster; Rb-Rabbit; Sh- Sheep; Pg-Pig; Z-Zebrafish;X-Xenopus; C-Cow.

Please contact Origin Diagnostics and Research for further assistance

[www.originlab.in](http://www.originlab.in)

[info@originlab.in](mailto:info@originlab.in)

+91-7736237778