

CD9 Rabbit Polyclonal Antibody

OPR1919

Reactivity H,M,R

Host Rabbit

Isotype IgG

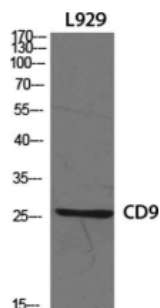
Storage -20 °C, Avoid freeze/ thaw cycles

Applications WB;IHC;IF;ELISA

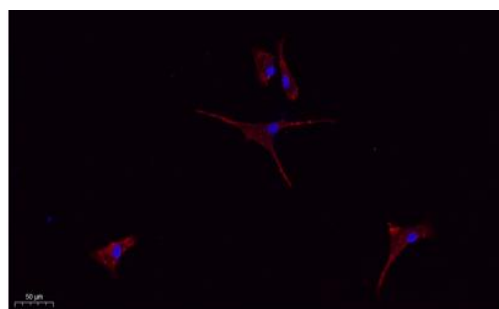
Concentration 1 mg/mL

Note: Centrifuge before opening to ensure complete recovery of vial contents.

Images



Western Blot analysis of various cells using CD9 Polyclonal Antibody diluted at 1:1000



Immunofluorescence analysis of A549. 1,primary Antibody(red) was diluted at 1:200(4°C overnight). 2, Goat Anti Rabbit IgG (H&L) - Alexa Fluor 594 Secondary antibody was diluted at 1:1000(room temperature, 50min).3, Picture B: DAPI(blue) 10min

Immunogen Information

Immunogen The antiserum was produced against synthesized peptide derived from human CD9.

AA range:101-150

Swissprot P21926

Synonyms CD9; MIC3; TSPAN29; GIG2; CD9 antigen; 5H9 antigen; Cell growth-inhibiting gene 2 protein; Leukocyte antigen MIC3; Motility-related protein; MRP-1; Tetraspanin-29; Tspan-29; p24; CD antigen CD 9

Product Information

Observed MW 25 kDa

Buffer PBS containing 50% glycerol, 0.5% BSA and 0.02% sodium azide

Dilution WB:1/500-1/2000;IHC-p:1:100-300;IF:1:100-300
ELISA: 1/20000

Other applications have not been tested. Optimal dilutions/concentrations should be determined by the end user.

Background

This gene encodes a member of the transmembrane 4 superfamily, also known as the tetraspanin family. Tetraspanins are cell surface glycoproteins with four transmembrane domains that form multimeric complexes with other cell surface proteins. The encoded protein functions in many cellular processes including differentiation, adhesion, and signal transduction, and expression of this gene plays a critical role in the suppression of cancer cell motility and metastasis.

Research Use

For research use only, not for use in diagnostic procedure.

Legend

Applications: WB-Western Blot; IHC-Immunohistochemistry; IF-Immunofluorescence; IP-Immunoprecipitation; FC-Flow cytometry;ChIP-Chromatin Immunoprecipitation

Reactivity: H-Human; R-Rat; M-Mouse; Mk-Monkey; Dg-Dog; Ch-Chicken; Hm-Hamster; Rb-Rabbit; Sh- Sheep; Pg-Pig; Z-Zebrafish;X-Xenopus; C-Cow.

Please contact Origin Diagnostics and Research for further assistance

www.originlab.in

info@originlab.in

+91-7736237778