

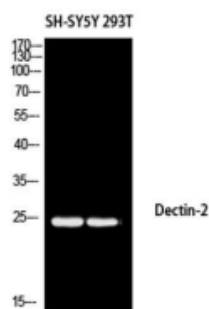
# Dectin-2 Rabbit Polyclonal Antibody

OPR8367

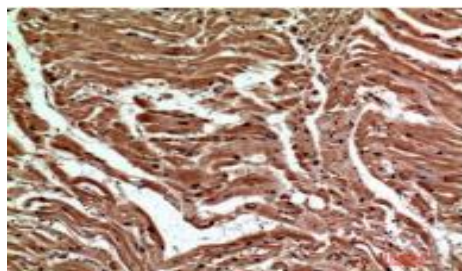
<b>Reactivity</b>	H,M,R	<b>Storage</b>	-20 °C, Avoid freeze/ thaw cycles
<b>Host</b>	Rabbit	<b>Applications</b>	WB;IHC;IF;ELISA
<b>Isotype</b>	IgG	<b>Concentration</b>	1 mg/mL

Note: Centrifuge before opening to ensure complete recovery of vial contents.

## Images



Western blot analysis of SH-SY5Y 293T using Dectin-2 antibody. Antibody was diluted at 1:1000. Secondary antibody was diluted at 1:20000.



Immunohistochemical analysis of paraffin-embedded human-heart, antibody was diluted at 1:200.

## Immunogen Information

<b>Immunogen</b>	Synthesized peptide derived from the Internal region of human Dectin-2
<b>Swissprot</b>	Q6EIG7
<b>Synonyms</b>	CLEC6A; CLECSF10; DECTIN2; C-type lectin domain family 6 member A; C-type lectin superfamily member 10; Dendritic cell-associated C-type lectin2; DC-associated C-type lectin 2; Dectin-2

## Product Information

<b>Observed MW</b>	23 kDa
<b>Buffer</b>	PBS containing 50% glycerol, 0.5% BSA and 0.02% sodium azide
<b>Dilution</b>	WB: 1/500-1/2000; IHC-p: 1:100-1:300; ELISA: 1/10000.

Other applications have not been tested. Optimal dilutions/concentrations should be determined by the end user.

## Background

The protein encoded by this gene is a type II membrane receptor with an extracellular C-type lectin-like domain fold. The extracellular portion binds structures with a high mannose content and has been shown to recognize several pathogens, including *C. elegans*, *S. cerevisiae*, *M. tuberculosis*, *C. neoformans*, and house dust mite. When stimulated, the encoded protein initiates signaling through the CARD9-Bcl10-Malt1 pathway, leading to the induction of cytokines. Two transcript variants encoding different isoforms have been found for this gene.

## Research Use

For research use only, not for use in diagnostic procedure.

## Legend

Applications: WB-Western Blot; IHC-Immunohistochemistry; IF-Immunofluorescence; IP-Immunoprecipitation; FC-Flow cytometry; ChIP-Chromatin Immunoprecipitation

Reactivity: H-Human; R-Rat; M-Mouse; Mk-Monkey; Dg-Dog; Ch-Chicken; Hm-Hamster; Rb-Rabbit; Sh- Sheep; Pg-Pig; Z-Zebrafish; X-Xenopus; C-Cow.

Please contact Origin Diagnostics and Research for further assistance

[www.originlab.in](http://www.originlab.in)

[info@originlab.in](mailto:info@originlab.in)

+91-7736237778