

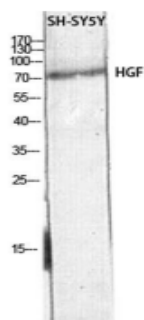
HGF Rabbit Polyclonal Antibody

OPR8380

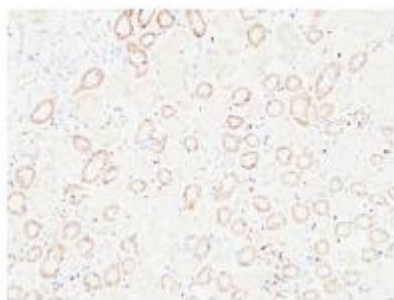
| | | | |
|-------------------|---------|----------------------|-----------------------------------|
| Reactivity | H, M, R | Storage | -20°C, Avoid freeze / thaw cycles |
| Host | Rabbit | Applications | WB;IHC;IF;ELISA |
| Isotype | IgG | Concentration | 1 mg/mL |

Note: Centrifuge before opening to ensure complete recovery of vial contents.

Images



Western blot analysis of SH-SY5Y lysis using HGF antibody. Antibody was diluted at 1:500. Secondary antibody was diluted at 1:20000.



Immunohistochemical analysis of paraffin-embedded Human kidney. 1, Antibody was diluted at 1:200(4° overnight). 2, High-pressure and temperature EDTA, pH 8.0 was used for antigen retrieval. 3, Secondary antibody was diluted at 1:200(room temperature, 30 min)

Immunogen Information

| | |
|------------------|--|
| Immunogen | The antiserum was produced against synthesized peptide derived from the Internal region of human HGF. AA range:500-600 |
| Swissprot | P14210 |
| Synonyms | HGF; HPTA; Hepatocyte growth factor; Hepatopoietin-A; Scatter factor; SF |

Product Information

| | |
|--------------------|---|
| Observed MW | 80 kDa |
| Buffer | PBS containing 50% glycerol, 0.5% BSA and 0.02% sodium azide. |
| Dilution | IHC-p: 100-300, WB: 1/500 - 1/2000, ELISA: 1/10000. |

Other applications have not been tested. Optimal dilutions/concentrations should be determined by the end user

Background

This gene encodes a protein that binds to the hepatocyte growth factor receptor to regulate cell growth, cell motility and morphogenesis in numerous cell and tissue types. Alternative splicing results in multiple transcript variants, at least one of which encodes a preproprotein that is proteolytically processed to generate alpha and beta chains, which form the mature heterodimer. This protein is secreted by mesenchymal cells and acts as a multi-functional cytokine on cells of mainly epithelial origin. This protein also plays a role in angiogenesis, tumorigenesis, and tissue regeneration. Although the encoded protein is a member of the peptidase S1 family of serine proteases, it lacks peptidase activity. Mutations in this gene are associated with nonsyndromic hearing loss.

Research Use

For research use only, not for use in diagnostic procedure

Legend

Applications: WB-Western Blot; IHC-Immunohistochemistry; IF-Immunofluorescence; IP-Immunoprecipitation; FC-Flow cytometry; ChIP-Chromatin Immunoprecipitation

Reactivity: H-Human; R-Rat; M-Mouse; Mk-Monkey; Dg-Dog; Ch-Chicken; Hm-Hamster; Rb-Rabbit; Sh- Sheep; Pg-Pig; Z-Zebrafish; X-Xenopus; C-Cow, Fs- fish.

Please contact Origin Diagnostics and Research for further assistance

www.originlab.in

info@originlab.in

+91-7736237778