

ANG I Rabbit Polyclonal Antibody

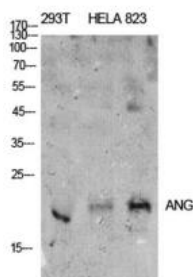
OPR4273

Reactivity H,M,R
Host Rabbit
Isotype IgG

Storage -20°C, Avoid freeze / thaw cycles
Applications WB;ELISA,IHC,IF
Concentration 1 mg/mL

Note: Centrifuge before opening to ensure complete recovery of vial contents.

Images



Western Blot analysis of 293T, Hela, 823 cells using ANG I Polyclonal Antibody. Antibody was diluted at 1:500. Secondary antibody was diluted at 1:20000 cells nucleus extracted by Minute TM Cytoplasmic and Nuclear Fractionation kit.



Immunohistochemical analysis of paraffin-embedded human-liver, antibody was diluted at 1:100.

Immunogen Information

Immunogen The antiserum was produced against synthesized peptide derived from the N-terminal region of human ANG. AA range:11-60
Swissprot P03950
Synonyms ANG; RNASE5; Angiogenin; Ribonuclease 5; RNase 5

Product Information

Observed MW 17 kDa
Buffer PBS containing 50% glycerol, 0.5% BSA and 0.02% sodium azide.
Dilution WB: 1/500 - 1/2000. IHC-p: 1:100-1:300. ELISA: 1/10000

Other applications have not been tested. Optimal dilutions/concentrations should be determined by the end user

Background

Angiogenin(ANG) Homo sapiens the protein encoded by this gene is an exceedingly potent mediator of new blood vessel formation. It hydrolyzes cellular tRNAs resulting in decreased protein synthesis and is similar to pancreatic ribonuclease. In addition, the mature peptide has antimicrobial activity against some bacteria and fungi, including *S. pneumoniae* and *C. albicans*. Alternative splicing results in two transcript variants encoding the same protein. This gene and the gene that encodes ribonuclease, RNase A family, 4 share promoters and 5' exons. Each gene splices to a unique downstream exon that contains its complete coding region.

Research Use

For research use only, not for use in diagnostic procedure.

Legend

Applications: WB-Western Blot; IHC-Immunohistochemistry; IF-Immunofluorescence; IP-Immunoprecipitation; FC-Flow cytometry; ChIP-Chromatin Immunoprecipitation

Reactivity: H-Human; R-Rat; M-Mouse; Mk-Monkey; Dg-Dog; Ch-Chicken; Hm-Hamster; Rb-Rabbit; Sh- Sheep; Pg-Pig; Z-Zebrafish; X-Xenopus; C-Cow.

Please contact Origin Diagnostics and Research for further assistance

www.originlab.in

info@originlab.in

+91-7736237778