

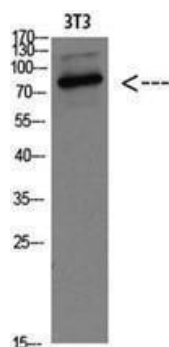
GRP78 BiP Rabbit Polyclonal Antibody

OPR180

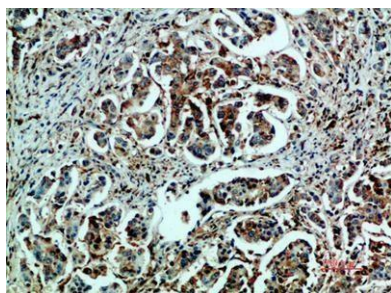
Reactivity	H, M, R, Fs	Storage	-20°C, Avoid freeze / thaw cycles
Host	Rabbit	Applications	WB; IHC; ELISA
Isotype	IgG	Concentration	1 mg/mL

Note: Centrifuge before opening to ensure complete recovery of vial contents.

Images



Western blot analysis of 3T3 Cell Lysate, antibody was diluted at 1:1000. Secondary antibody was diluted at 1:20000.



Immunohistochemical analysis of paraffin-embedded human breast cancer, antibody was diluted at 1: 200.

Immunogen Information

Immunogen	Synthesized peptide from human protein AA range:505- 570
Swissprot	P11021
Synonyms	78 kDa glucose-regulated protein (GRP-78) (Endoplasmic reticulum luminal Ca (2+)-binding protein grp78) (Heat shock 70 kDa protein 5) (Immunoglobulin heavy chain- binding protein) (BiP)

Product Information

Observed MW	78kD
Buffer	PBS containing 50% glycerol, 0.5% BSA and 0.02% sodium azide.
Dilution	WB: 1/500 - 1/2000, IHC-p/f: 1:50-300, ELISA: 1/10000 - 20000

Other applications have not been tested. Optimal dilutions/concentrations should be determined by the end user

Background

The protein encoded by this gene is a member of the heat shock protein 70 (HSP70) family. It is localized in the lumen of the endoplasmic reticulum (ER), and is involved in the folding and assembly of proteins in the ER. As this protein interacts with many ER proteins, it may play a key role in monitoring protein transport through the cell.

Research Use

For research use only, not for use in diagnostic procedure

Legend

Applications: WB-Western Blot; IHC-Immunohistochemistry; IF-Immunofluorescence; IP-Immunoprecipitation; FC-Flow cytometry; ChIP-Chromatin Immunoprecipitation

Reactivity: H-Human; R-Rat; M-Mouse; Mk-Monkey; Dg-Dog; Ch-Chicken; Hm-Hamster; Rb-Rabbit; Sh- Sheep; Pg-Pig; Z- Zebrafish; X-Xenopus; C-Cow,Fs- fish.

Please contact Origin Diagnostics and Research for further assistance

www.originlab.in

info@originlab.in

+91-7736237778