

NFκB-p65 (phospho Ser529) Rabbit Polyclonal Antibody

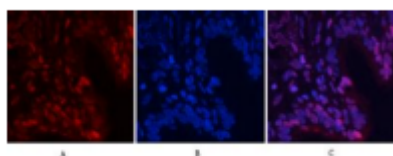
OPR1370

Reactivity H, R, M, Mk
Host Rabbit
Isotype IgG

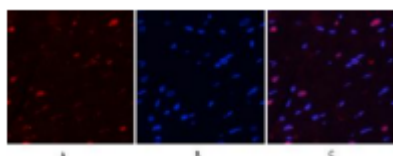
Storage -20°C, Avoid freeze / thaw cycles
Applications IF; WB; IHC; ELISA
Concentration 1 mg/mL

Note: Centrifuge before opening to ensure complete recovery of vial contents.

Images



Immunofluorescence analysis of human-lung tissue. 1, NFκB-p65 (phospho Ser529) Polyclonal Antibody (red) was diluted at 1:200 (4°C, overnight). 2, Cy3 labeled Secondary antibody was diluted at 1:300 (room temperature, 50 min). 3, Picture B: DAPI (blue) 10 min.



Immunofluorescence analysis of rat-heart tissue. 1, NFκB-p65 (phospho Ser529) Polyclonal Antibody (red) was diluted at 1:200 (4°C, overnight). 2, Cy3 labeled Secondary antibody was diluted at 1:300 (room temperature, 50 min). 3, Picture B: DAPI (blue) 10 min. Picture A: Target. Picture B: DAPI. Picture C: merge of A+B

Immunogen Information

Immunogen Synthesized phospho-peptide around the phosphorylation site of human NFκB-p65 (phosphoSer529)
Swissprot Q04206
Synonyms RELA; NFKB3; Transcription factor p65; Nuclear factor NF-kappa-B p65 subunit; Nuclear factor of kappa light polypeptide gene enhancer in B-cells 3

Product Information

Observed MW 60 kDa
Buffer PBS containing 50% glycerol, 0.5% BSA and 0.02% sodium azide.
Dilution IF: 1:50-200, WB: 1/500 - 1/2000, IHC: 1/100 - 1/300. ELISA: 1/20000.

Other applications have not been tested. Optimal dilutions/concentrations should be determined by the end user

Background

NF-kappa-B is a ubiquitous transcription factor involved in several biological processes. It is held in the cytoplasm in an inactive state by specific inhibitors. Upon degradation of the inhibitor, NF-kappa-B moves to the nucleus and activates transcription of specific genes. NF-kappa-B is composed of NFKB1 or NFKB2 bound to either REL, RELA, or RELB. The most abundant form of NF-kappa-B is NFKB1 complexed with the product of this gene, RELA. Four transcript variants encoding different isoforms have been found for this gene.

Research Use

For research use only, not for use in diagnostic procedure

Legend

Applications: WB-Western Blot; IHC-Immunohistochemistry; IF-Immunofluorescence; IP-Immunoprecipitation; FC-Flow cytometry; ChIP-Chromatin Immunoprecipitation

Reactivity: H-Human; R-Rat; M-Mouse; Mk-Monkey; Dg-Dog; Ch-Chicken; Hm-Hamster; Rb-Rabbit; Sh-Sheep; Pg-Pig; Z-Zebrafish; X-Xenopus; C-Cow, Fs-fish.

Please contact Origin Diagnostics and Research for further assistance

www.originlab.in

info@originlab.in

+91-7736237778