

CaMKII α/δ (phospho Thr286) Rabbit Polyclonal Antibody

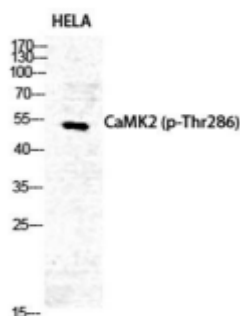
OPR7642

Reactivity H, R,M,Pg
Host Rabbit
Isotype IgG

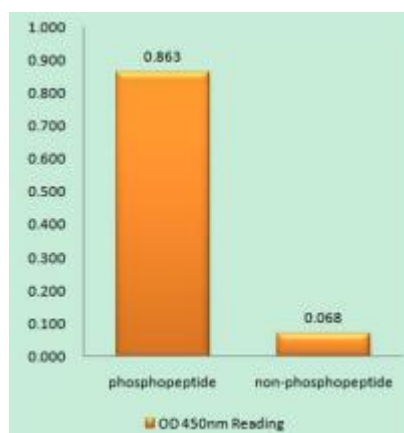
Storage -20°C, Avoid freeze / thaw cycles
Applications WB; IHC,IF,ELISA
Concentration 1 mg/mL

Note: Centrifuge before opening to ensure complete recovery of vial contents.

Images



Western Blot analysis of HELA cells using Phospho-CaMKII α/δ (T286) Polyclonal Antibody diluted at 1:500.



Enzyme-Linked Immunosorbent Assay (Phospho-ELISA) for Immunogen Phosphopeptide (Phospho-left) and Non-Phosphopeptide (Phospho-right), using CaMK2 (Phospho-Thr286) Antibody.

Immunogen Information

Immunogen The antiserum was produced against synthesized peptide derived from human CaMK2 around the phosphorylation site of Thr286.
AA range:256-305

Swissprot Q9UQM7/Q13557

Synonyms CAMK2A; CAMKA; KIAA0968;

Product Information

Observed MW 54 kDa

Buffer PBS containing 50% glycerol, 0.5% BSA and 0.02% sodium azide

Dilution WB: 1/500 - 1/2000,IHC: 1/100 - 1/300.
IF: 1/200 - 1/1000,ELISA: 1/10000

Other applications have not been tested. Optimal dilutions/concentrations should be determined by the end user

Background

The product of this gene belongs to the serine/threonine protein kinases family, and to the Ca(2+)/calmodulin-dependent protein kinases subfamily. Calcium signaling is crucial for several aspects of plasticity at glutamatergic synapses. This calcium calmodulin-dependent protein kinase is composed of four different chains: alpha, beta, gamma, and delta. The alpha chain encoded by this gene is required for hippocampal long-term potentiation (LTP) and spatial learning. In addition to its calcium-calmodulin (CaM)-dependent activity, this protein can undergo autophosphorylation, resulting in CaM-independent activity. Two transcript variants encoding distinct isoforms have been identified for this gene.

Research Use

For research use only, not for use in diagnostic procedure

Legend

Applications: WB-Western Blot; IHC-Immunohistochemistry; IF-Immunofluorescence; IP-Immunoprecipitation; FC-Flow cytometry; ChIP-Chromatin Immunoprecipitation

Reactivity: H-Human; R-Rat; M-Mouse; Mk-Monkey; Dg-Dog; Ch-Chicken; Hm-Hamster; Rb-Rabbit; Sh- Sheep; Pg-Pig; Z-Zebrafish; X-Xenopus; C-Cow.

Please contact Origin Diagnostics and Research for further assistance

www.originlab.in

info@originlab.in

+91-7736237778