

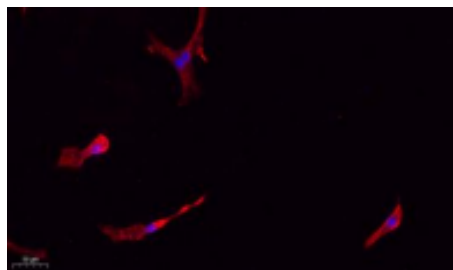
Caspase-1 Rabbit Polyclonal Antibody

OPR8461

Reactivity	H,M,R	Storage	-20°C, Avoid freeze/ thaw cycles
Host	Rabbit	Applications	WB;IHC;IF;ELISA
Isotype	IgG	Concentration	1 mg/mL

Note: Centrifuge before opening to ensure complete recovery of vial contents.

Images



Immunofluorescence analysis of A549. 1, primary Antibody (red) was diluted at 1:200 (4°C overnight). 2, Goat Anti Rabbit IgG (H&L) - Alexa Fluor 594 Secondary antibody was diluted at 1:1000 (room temperature, 50 minute). 3, Picture B: DAPI (blue) 10 minute.

Immunogen Information

Immunogen	The antiserum was produced against synthesized peptide derived from the C-terminal region of human CASP1. AA range: 350-400
Swissprot	P29466
Synonyms	caspase 1, apoptosis-related cysteine peptidase (interleukin 1, beta, convertase)

Product Information

Observed MW	45 kDa
Buffer	PBS containing 50% glycerol, 0.5% BSA and 0.02% sodium azide
Dilution	WB: 1:500-2000; IHC: 1:50-300; IF: 1:50-200 ELISA: 1:10000-20000.

Other applications have not been tested. Optimal dilutions/concentrations should be determined by the end user.

Background

This gene encodes a protein which is a member of the cysteine-aspartic acid protease (caspase) family. Sequential activation of caspases plays a central role in the execution-phase of cell apoptosis. Caspases exist as inactive proenzymes which undergo proteolytic processing at conserved aspartic residues to produce 2 subunits, large and small, that dimerize to form the active enzyme. This gene was identified by its ability to proteolytically cleave and activate the inactive precursor of interleukin-1, a cytokine involved in the processes such as inflammation, septic shock, and wound healing. This gene has been shown to induce cell apoptosis and may function in various developmental stages. Studies of a similar gene in mouse suggest a role in the pathogenesis of Huntington disease. Alternative splicing results in transcript variants encoding distinct isoforms.

Research Use

For research use only, not for use in diagnostic procedure.

Legend

Applications: WB-Western Blot; IHC-Immunohistochemistry; IF-Immunofluorescence; IP-Immunoprecipitation; FC-Flow cytometry; ChIP-Chromatin Immunoprecipitation

Reactivity: H-Human; R-Rat; M-Mouse; Mk-Monkey; Dg-Dog; Ch-Chicken; Hm-Hamster; Rb-Rabbit; Sh-Sheep; Pg-Pig; Z-Zebrafish; X-Xenopus; C-Cow.

Please contact Origin Diagnostics and Research for further assistance

www.originlab.in

info@originlab.in

+91-7736237778