

Caspase-3 (4B8) Mouse Monoclonal Antibody

OPM1266

Reactivity H,M,R

Host Mouse

Isotype IgG1

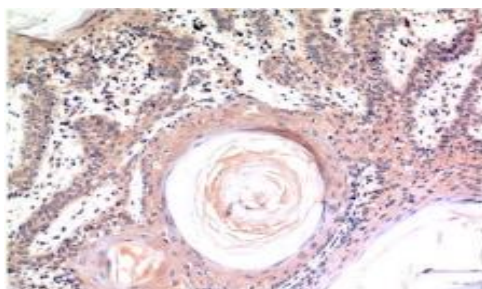
Storage -20 °C, Avoid freeze/ thaw cycles

Applications IHC

Concentration 1 mg/mL

Note: Centrifuge before opening to ensure complete recovery of vial contents.

Images



Immunohistochemical analysis of paraffin-embedded Human Skin Tissue using Caspase-3 Mouse mAb diluted at: 200.

Immunogen Information

Immunogen Synthetic Peptide

Swissprot P42574

Synonyms APOPAIN antibody CASP 3 antibody CPP32 antibody Cysteine protease CPP32 antibody

Product Information

Observed MW 1732 kDa

Buffer PBS with 0.02% sodium azide and 50% glycerol pH 7.4

Dilution IHC :1/100-200

Other applications have not been tested. Optimal dilutions/concentrations should be determined by the end user.

Background

Caspase-3 (CPP-32 Apoptain Yama SCA-1) is a critical executioner of apoptosis as it is either partially or totally responsible for the proteolytic cleavage of many key proteins such as the nuclear enzyme poly(ADP-ribose) polymerase (PARP).

Research Use

For research use only, not for use in diagnostic procedure.

Legend

Applications: WB-Western Blot; IHC-Immunohistochemistry; IF-Immunofluorescence; IP-Immunoprecipitation; FC-Flow cytometry; ChIP-Chromatin Immunoprecipitation

Reactivity: H-Human; R-Rat; M-Mouse; Mk-Monkey; Dg-Dog; Ch-Chicken; Hm-Hamster; Rb-Rabbit; Sh- Sheep; Pg-Pig; Z-Zebrafish; X-Xenopus; C-Cow.

Please contact Origin Diagnostics and Research for further assistance

www.originlab.in

info@originlab.in

+91-7736237778