

# HIF-1 $\alpha$ Rabbit Polyclonal Antibody

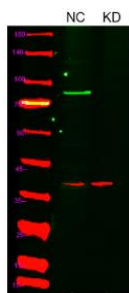
OPR2512

**Reactivity** H,M,R  
**Host** Rabbit  
**Isotype** IgG

**Storage** -20 °C, Avoid freeze/ thaw cycles  
**Applications** WB;IHC; IF;IP;ELISA  
**Concentration** 1 mg/mL

Note: Centrifuge before opening to ensure complete recovery of vial contents.

## Images



Western blot analysis of lysates from 1) Hela cell, 2) Hela cells knockdown by siRNA (F:GCCACAUUCACGUAUAUGATT, R:UCAUAUACGUGAUGUGGCTT), (Green) primary antibody was diluted at 1:1000, 4° over night, Dylight 800 secondary antibody was diluted.

## Immunogen Information

**Immunogen** The antiserum was produced against synthesized peptide derived from human HIF-1 $\alpha$ .  
AA range:328-377

**Swissprot** Q16665

**Synonyms** HIF1A; BHLHE78; MOP1; PASD8; Hypoxia-inducible factor 1- $\alpha$ ;HIF-1- $\alpha$ ;HIF1- $\alpha$ ; ARNT-interacting protein; Basic-helix-loop-helix-PAS protein MOP1; Class E basic helix-loop-helix protein78; bHLHe78; Member of PAS protein 1; PAS domain hypoxia inducible factor 1  $\alpha$  subunit(HIF1A).

## Product Information

**Observed MW** 92-130 kDa

**Buffer** PBS containing 50% glycerol, 0.5% BSA and 0.02% sodium azide

**Dilution** WB: 1/500 - 1/2000;IHC: 1/100 - 1/300;  
IF: 1:50-200;IP: 1:200; ELISA: 1/40000.

Other applications have not been tested. Optimal dilutions/concentrations should be determined by the end user.

## Background

This gene encodes the  $\alpha$  subunit of transcription factor hypoxia-inducible factor-1 (HIF-1), which is a heterodimer composed of an  $\alpha$  and a  $\beta$  subunit. HIF-1 functions as a master regulator of cellular and systemic homeostatic response to hypoxia by activating transcription of many genes, including those involved in energy metabolism, angiogenesis, apoptosis, and other genes whose protein products increase oxygen delivery or facilitate metabolic adaptation to hypoxia. HIF-1 thus plays an essential role in embryonic vascularization, tumor angiogenesis and pathophysiology of ischemic disease. Alternatively spliced transcript variants encoding different isoforms have been identified for this gene.

## Research Use

For research use only, not for use in diagnostic procedure.

## Legend

Applications: WB-Western Blot; IHC-Immunohistochemistry; IF-Immunofluorescence; IP-Immunoprecipitation; FC-Flow cytometry;ChIP-Chromatin Immunoprecipitation

Reactivity: H-Human; R-Rat; M-Mouse; Mk-Monkey; Dg-Dog; Ch-Chicken; Hm-Hamster; Rb-Rabbit; Sh- Sheep; Pg-Pig; Z-Zebrafish;X-Xenopus; C-Cow.

Please contact Origin Diagnostics and Research for further assistance

[www.originlab.in](http://www.originlab.in)

[info@originlab.in](mailto:info@originlab.in)

+91-7736237778