

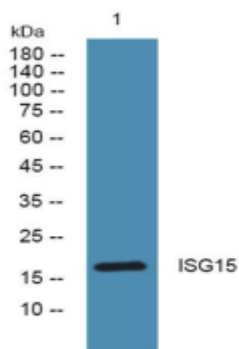
# ISG15 Rabbit Polyclonal Antibody

OPR11018

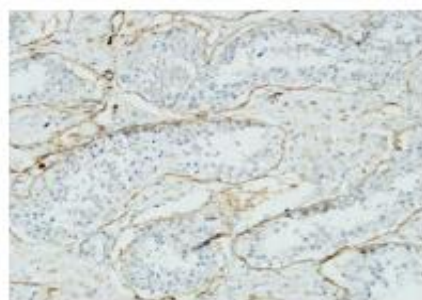
<b>Reactivity</b>	H, M	<b>Storage</b>	-20°C, Avoid freeze / thaw cycles
<b>Host</b>	Rabbit	<b>Applications</b>	WB;IHC;IF;ELISA
<b>Isotype</b>	IgG	<b>Concentration</b>	1 mg/mL

Note: Centrifuge before opening to ensure complete recovery of vial contents.

## Images



Western blot analysis of lysates from PC12 cells, primary antibody was diluted at 1:1000, 4° over night



Immunohistochemical analysis of paraffin-embedded mouse-liver tissue. 1, ISG15 Polyclonal Antibody was diluted at 1:200 (4° overnight). 2, EDTA pH 9.0 was used for antigen retrieval (>98°C, 20 min). 3, Secondary antibody was diluted at 1:200 (room temperature)

## Immunogen Information

<b>Immunogen</b>	Synthesized peptide derived from part region of human protein
<b>Swissprot</b>	P05161

## Product Information

<b>Observed MW</b>	18 kDa
<b>Buffer</b>	PBS containing 50% glycerol, 0.5% BSA and 0.02% sodium azide.
<b>Dilution</b>	WB: 1/500 - 1/2000, IHC: 1/100 - 1/300, ELISA: 1/5000

Other applications have not been tested. Optimal dilutions/concentrations should be determined by the end user

## Background

The protein encoded by this gene is a ubiquitin-like protein that is conjugated to intracellular target proteins upon activation by interferon-alpha and interferon-beta. Several functions have been ascribed to the encoded protein, including chemotactic activity towards neutrophils, direction of ligated target proteins to intermediate filaments, cell-to-cell signaling, and antiviral activity during viral infections. While conjugates of this protein have been found to be noncovalently attached to intermediate filaments, this protein is sometimes secreted..

## Research Use

For research use only, not for use in diagnostic procedure

## Legend

Applications: WB-Western Blot; IHC-Immunohistochemistry; IF-Immunofluorescence; IP-Immunoprecipitation; FC-Flow cytometry; ChIP-Chromatin Immunoprecipitation

Reactivity: H-Human; R-Rat; M-Mouse; Mk-Monkey; Dg-Dog; Ch-Chicken; Hm-Hamster; Rb-Rabbit; Sh- Sheep; Pg-Pig; Z- Zebrafish; X-Xenopus; C-Cow, Fs- fish.

Please contact Origin Diagnostics and Research for further assistance

[www.originlab.in](http://www.originlab.in)

[info@originlab.in](mailto:info@originlab.in)

+91-7736237778