

Keap-1 Rabbit Polyclonal Antibody

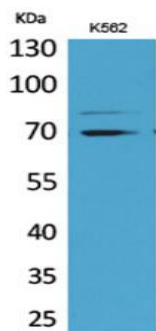
OPR3948

Reactivity H,M,R
Host Rabbit
Isotype IgG

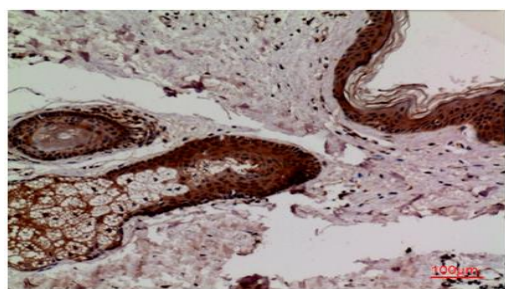
Storage -20 °C, Avoid freeze/ thaw cycles
Applications WB;IHC;IF;ELISA
Concentration 1 mg/mL

Note: Centrifuge before opening to ensure complete recovery of vial contents.

Images



Western Blot analysis of K562 cells using Keap1 Polyclonal Antibody. Antibody was diluted at 1:1000. Secondary antibody was diluted at 1:20000.



Immunohistochemical analysis of paraffin-embedded human skin, antibody was diluted at 1:100.

Immunogen Information

Immunogen The antiserum was produced against synthesized peptide derived from the Internal region of human KEAP1. AA range:411-460 Q14145
Swissprot KEAP1; INRF2; KIAA0132; KLHL19;
Synonyms Kelch-like ECH-associated protein 1; Cytosolic inhibitor of Nrf2; INrf2; Kelch-like protein 19.

Product Information

Observed MW 70 kDa
Buffer PBS containing 50% glycerol, 0.5% BSA and 0.02% sodium azide
Dilution WB:1/500-1/2000;IHC-p:1:100-300, ELISA: 1/20000

Other applications have not been tested. Optimal dilutions/concentrations should be determined by the end user.

Background

This gene encodes a protein containing KELCH-1 like domains, as well as a BTB/POZ domain. Kelch-like ECH-associated protein 1 interacts with NF-E2-related factor 2 in a redox-sensitive manner and the dissociation of the proteins in the cytoplasm is followed by transportation of NF-E2-related factor 2 to the nucleus. This interaction results in the expression of the catalytic subunit of gamma-glutamylcysteine synthetase. Two alternatively spliced transcript variants encoding the same isoform have been found for this gene.

Research Use

For research use only, not for use in diagnostic procedure.

Legend

Applications: WB-Western Blot; IHC-Immunohistochemistry; IF-Immunofluorescence; IP-Immunoprecipitation; FC-Flow cytometry;ChIP-Chromatin Immunoprecipitation

Reactivity: H-Human; R-Rat; M-Mouse; Mk-Monkey; Dg-Dog; Ch-Chicken; Hm-Hamster; Rb-Rabbit; Sh- Sheep; Pg-Pig; Z-Zebrafish;X-Xenopus; C-Cow.

Please contact Origin Diagnostics and Research for further assistance

www.originlab.in

info@originlab.in

+91-7736237778