

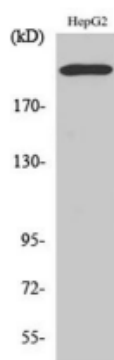
Integrin $\beta 4$ Rabbit Polyclonal Antibody

OPR2632

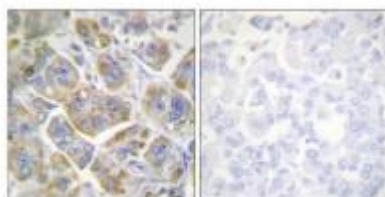
Reactivity	H,M,R	Storage	-20°C, Avoid freeze / thaw cycles
Host	Rabbit	Applications	WB;IHC;IF;ELISA
Isotype	IgG	Concentration	1 mg/mL

Note: Centrifuge before opening to ensure complete recovery of vial contents.

Images



Western Blot analysis of various cells using Integrin $\beta 4$ Polyclonal Antibody



Immunohistochemistry analysis of paraffin-embedded human breast carcinoma tissue, using Integrin $\beta 4$ Antibody. The picture on the right is blocked with the synthesized peptide.

Immunogen Information

Immunogen	The antiserum was produced against synthesized peptide derived from human Integrin $\beta 4$. AA range:1481-1530
Swissprot	P16144
Synonyms	ITGB4; Integrin $\beta 4$; GP150; CD antigen CD104

Product Information

Observed MW	202 kDa
Buffer	PBS containing 50% glycerol, 0.5%BSA and 0.02% sodium azide.
Dilution	WB: 1/500 - 1/2000,IHC: 1/100 - 1/300, ELISA: 1/20000

Other applications have not been tested. Optimal dilutions/concentrations should be determined by the end user

Background

Integrins are heterodimers comprised of alpha and beta subunits, that are noncovalently associated transmembrane glycoprotein receptors. Different combinations of alpha and beta polypeptides form complexes that vary in their ligand-binding specificities. Integrins mediate cell-matrix or cell-cell adhesion, and transduced signals that regulate gene expression and cell growth. This gene encodes the integrin $\beta 4$ subunit, a receptor for the laminins. This subunit tends to associate with alpha 6 subunit and is likely to play a pivotal role in the biology of invasive carcinoma. Mutations in this gene are associated with epidermolysis bullosa with pyloric atresia. Multiple alternatively spliced transcript variants encoding distinct isoforms have been found for this gene.

Research Use

For research use only, not for use in diagnostic procedure

Legend

Applications: WB-Western Blot; IHC-Immunohistochemistry; IF-Immunofluorescence; IP-Immunoprecipitation; FC-Flow cytometry; ChIP-Chromatin Immunoprecipitation

Reactivity: H-Human; R-Rat; M-Mouse; Mk-Monkey; Dg-Dog; Ch-Chicken; Hm-Hamster; Rb-Rabbit; Sh- Sheep; Pg-Pig; Z-Zebrafish; X-Xenopus; C-Cow,Is-Insect,Ys- yeast.

Please contact Origin Diagnostics and Research for further assistance

www.originlab.in

info@originlab.in

+91-7736237778