

SGLT-2 Rabbit Polyclonal Antibody

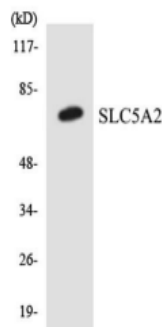
OPR7217

Reactivity H,M,R
Host Rabbit
Isotype IgG

Storage -20 °C, Avoid freeze/ thaw cycles
Applications WB;IHC
Concentration 1 mg/mL

Note: Centrifuge before opening to ensure complete recovery of vial contents.

Images



Western blot analysis of the lysates from Jurkat cells using SLC5A2 antibody.



Immunohistochemical analysis of paraffin-embedded human Colon cancer. 1, Antibody was diluted at 1:200(4° overnight). 2, Tris-EDTA, pH 9.0 was used for antigen retrieval. 3, Secondary antibody was diluted at 1:200(room temperature, 45minute)

Immunogen Information

Immunogen The antiserum was produced against synthesized peptide derived from human SLC5A2.

AA range:101-150

Swissprot P31639

Synonyms SLC5A2; SGLT2; Sodium/glucose cotransporter 2; Na(+)/glucose cotransporter 2; Low affinity sodium-glucose cotransporter; Solute carrier family 5 member 2.

Product Information

Observed MW 73 kDa

Buffer PBS containing 50% glycerol, 0.5% BSA and 0.02% sodium azide

Dilution WB: 1:500-2000;IHC-p:1:50-300.

Other applications have not been tested. Optimal dilutions/concentrations should be determined by the end user.

Background

This gene encodes a member of the sodium glucose cotransporter family which are sodium-dependent glucose transport proteins. The encoded protein is the major cotransporter involved in glucose reabsorption in the kidney. Mutations in this gene are associated with renal glucosuria. Two transcript variants, one protein-coding and one not, have been found for this gene.

Research Use

For research use only, not for use in diagnostic procedure.

Legend

Applications: WB-Western Blot; IHC-Immunohistochemistry; IF-Immunofluorescence; IP-Immunoprecipitation; FC-Flow cytometry;ChIP-Chromatin Immunoprecipitation

Reactivity: H-Human; R-Rat; M-Mouse; Mk-Monkey; Dg-Dog; Ch-Chicken; Hm-Hamster; Rb-Rabbit; Sh- Sheep; Pg-Pig; Z-Zebrafish;X-Xenopus; C-Cow.

Please contact Origin Diagnostics and Research for further assistance

www.originlab.in

info@originlab.in

+91-7736237778