

# Cathepsin D Rabbit Polyclonal Antibody

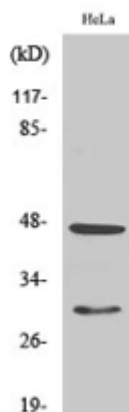
OPR1870

**Reactivity** H, R, M  
**Host** Rabbit  
**Isotype** IgG

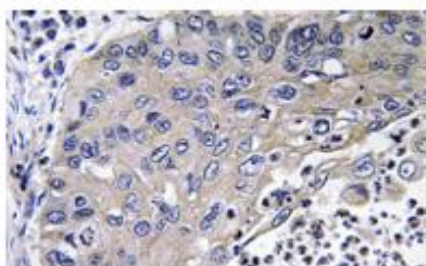
**Storage** -20°C, Avoid freeze / thaw cycles  
**Applications** WB; IHC; IF; ELISA  
**Concentration** 1 mg/mL

Note: Centrifuge before opening to ensure complete recovery of vial contents.

## Images



Western Blot analysis of various cells using Cathepsin D Polyclonal Antibody



Immunohistochemistry analysis of Cathepsin D antibody in paraffin-embedded human lung carcinoma tissue.

## Immunogen Information

**Immunogen** The antiserum was produced against synthesized peptide derived from human Cathepsin D. AA range:296-345  
**Swissprot** P07339  
**Synonyms** CTSD;CPSD; Cathepsin D

## Product Information

**Observed MW** 46,30 kDa  
**Buffer** PBS containing 50% glycerol,0.5% BSA and 0.02% sodium azide.  
**Dilution** WB:1/500-1/2000,IHC:1/100-1/300. ELISA: 1/40000

Other applications have not been tested. Optimal dilutions/concentrations should be determined by the end user

## Background

This gene encodes a member of the A1 family of peptidases. The encoded preproprotein is proteolytically processed to generate multiple protein products. These products include the cathepsin D light and heavy chains, which heterodimerize to form the mature enzyme. This enzyme exhibits pepsin-like activity and plays a role in protein turnover and in the proteolytic activation of hormones and growth factors. Mutations in this gene play a causal role in neuronal ceroid lipofuscinosis-10 and may be involved in the pathogenesis of several other diseases, including breast cancer and possibly Alzheimer's disease

## Research Use

For research use only, not for use in diagnostic procedure

## Legend

Applications: WB-Western Blot; IHC-Immunohistochemistry; IF-Immunofluorescence; IP-Immunoprecipitation; FC-Flow cytometry; ChIP-Chromatin Immunoprecipitation

Reactivity: H-Human; R-Rat; M-Mouse; Mk-Monkey; Dg-Dog; Ch-Chicken; Hm-Hamster; Rb-Rabbit; Sh- Sheep; Pg-Pig; Z-Zebrafish; X-Xenopus; C-Cow.

Please contact Origin Diagnostics and Research for further assistance

[www.originlab.in](http://www.originlab.in)

[info@originlab.in](mailto:info@originlab.in)

+91-7736237778