

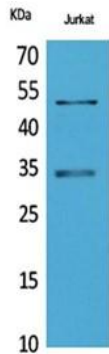
MyoD Rabbit Polyclonal Antibody

OPR4066

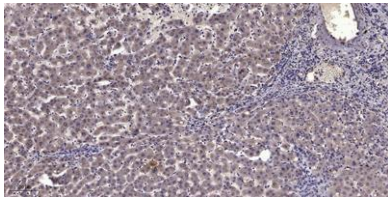
Reactivity	H, M, R, Ch	Storage	-20°C, Avoid freeze / thaw cycles
Host	Rabbit	Applications	WB;IHC
Isotype	IgG	Concentration	1 mg/mL

Note: Centrifuge before opening to ensure complete recovery of vial contents.

Images



Western Blot analysis of Jurkat cells using MyoD Polyclonal Antibody. Secondary antibody was diluted at 1:20000 (4°overnight).



Immunohistochemical analysis of paraffin-embedded human liver cancer. 1, Antibody was diluted at 1:200(4° overnight). 2, Tris-EDTA,pH9.0 was used for antigen retrieval. 3,Secondary antibody was diluted at 1:200(room temperature, 45min).

Immunogen Information

Immunogen	synthesized peptide derived from human MyoD around the non-acetylation site of Lys99/102. AA range:61-110
Swissprot	P15172

Product Information

Observed MW	35kD
Buffer	PBS containing 50% glycerol, 0.5% BSA and 0.02% sodium azide.
Dilution	WB: 1:500 - 2000, IHC-p 1:50-300

Other applications have not been tested. Optimal dilutions/concentrations should be determined by the end user

Background

This gene encodes a nuclear protein that belongs to the basic helix-loop-helix family of transcription factors and the myogenic factors subfamily. It regulates muscle cell differentiation by inducing cell cycle arrest, a prerequisite for myogenic initiation. The protein is also involved in muscle regeneration. It activates its own transcription which may stabilize commitment to myogenesis.

Research Use

For research use only, not for use in diagnostic procedure

Legend

Applications: WB-Western Blot; IHC-Immunohistochemistry; IF-Immunofluorescence; IP-Immunoprecipitation; FC-Flow cytometry; ChIP-Chromatin Immunoprecipitation

Reactivity: H-Human; R-Rat; M-Mouse; Mk-Monkey; Dg-Dog; Ch-Chicken; Hm-Hamster; Rb-Rabbit; Sh- Sheep; Pg-Pig; Z-Zebrafish; X-Xenopus; C-Cow,Fs- fish.